

# Citrus Notes

**Polk County Extension Service**PO Box 9005, Drawer HS03 • Bartow, FL 33831-9005  
(863) 519-8677, Ext. 109 • [wcoswalt@ufl.edu](mailto:wcoswalt@ufl.edu)**Hillsborough County Extension Service**5339 County Road 579 • Seffner, FL 33584-3334  
(813) 744-5519, Ext. 131**October 2009**

Vol. 09-08

**Inside this Issue:**

<b>October OJ Break</b>	<b>2</b>
<b>Annual Citrus Worker Safety Training and Tractor Rodeo</b>	<b>2</b>
<b>November Citrus Roundtable</b>	<b>2</b>
<b>2009-10 Winter Weather Watch</b>	<b>2 - 3</b>
<b>2009-10 Winter Weather Outlook</b>	<b>3 - 4</b>
<b>Preparing Groves for the Winter</b>	<b>4 - 5</b>
<b>Pesticide News and Information</b>	<b>5 - 6</b>

*Dear Growers,*

*Our October Polk County OJ Break is scheduled for Thursday of this week. The “Low Volume Application Technology for Citrus Pests” program includes lunch so you will need to pre-register. We will be holding our “Annual Citrus Worker Safety Training Program and Tractor Rodeo” in the first week of November. The 2009-10 edition of the Polk County Winter Weather Watch is slated to begin on November 15, 2009, registration information is included in this issue.*

*Take a look at the forecast for this winter in the 2009-10 winter weather outlook article. Similarly, I have included some basic considerations for preparing your groves for the winter. Don’t forget to look over the “Pesticide News and Information” section.*

*Enjoy the issue,*Chris Oswalt  
Citrus Extension Agent  
Polk/Hillsborough Counties  
863-519-8677 Extension 108  
P.O. Box 9005, Drawer HS03  
Bartow, FL 33831-9005



### ***October OJ Break***

On Thursday, October 8, 2009 our Polk

County OJ Break will be one of the series of UF/IFAS Citrus Agents “Low Volume Application Technology” meetings. The program will have 1 core and 1 private or ag tree crop CEU for your Restricted Use Pesticide License. I noticed that in last month’s newsletter it was mentioned that 3.5 CEU’s were available and that was in error. We will also have 2 CEU’s for Certified Crop Advisors available at our meeting. The meeting will include topics on: pesticides labeled for low volume applications, characteristics of low volume applications, applications considerations (weather) and worker safety.

Preregistration is required since lunch is included and meeting registration begins at 8:30 a.m. with the first presentation beginning at 9:00 a.m. To register call Gail Crawford at 863-519-8677 or email Gail at:

[dorothy@ufl.edu](mailto:dorothy@ufl.edu)

### ***Annual Citrus Worker Safety Training and Tractor Rodeo***



Our Annual Citrus Worker Safety Training and Tractor Rodeo is scheduled for Tuesday, November 3, 2009, at the Stuart Conference Center located at 1710 Highway 17 S in Bartow. Enclosed or attached you will find the program brochure along with the registration form. Registration costs are \$15 per person and will include lunch after the morning safety training. This

year we will be including a citrus scouts training and a contest in the morning session. In the afternoon we will be holding our tractor rodeo competition. This is an excellent opportunity for your operators to “show their stuff” competing against other operators entered in the contest. There will be 3 competitions: tractor-sprayer course, herbicide course and young tree fertilization. Trophies will be awarded for individuals and team competition winners. If you have not participated in the past or left after the morning program I would like to invite you to hang around after lunch as this has become quite the event. Rodeo rules and team registration are included in the program brochure.



### ***November Citrus Roundtable at Balm***

We will be back in Hillsborough County on Wednesday, November 4, 2009, for our Hillsborough County Citrus Roundtable. This month we will be holding our meeting at the Gulf Coast Research and Education Center located at 14625 CR 572 in Balm. The meeting will begin at 10:00 a.m. More details will be included in next months “Citrus Notes”.

### ***2009-10 Winter Weather Watch***

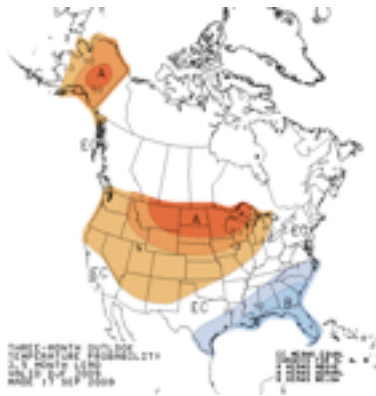
The 2009-10 version of the Polk County “Winter Weather Watch” is set to start on November 15, 2009. This citrus cold protection and weather program has been offered to Florida citrus growers for over



40 years. Enclosed you will find additional information and a registration form for this year's program. At this time we are planning on again providing citrus leaf freezing point temperatures during the winter. Our program will be providing forecast information and special weather narratives for the Pasco, Hillsborough, Polk, Hardee, Manatee, Sarasota, Desoto, Highlands, Glades, Henry, and eastern Collier County areas. These narratives will be provided by Fred Crosby, retired meteorologist from the National Weather Service Office in Ruskin. We will again only be charging a registration fee of \$100.00 for the November 15, 2009 to March 15, 2010 winter weather season. This is quite the bargain when you consider you get an unlisted telephone number and access to weather forecasts 24 hours a day, 7 days a week, a winter weather watch manual, weekly updates and special weather narratives during freeze events.

age sea surface temperatures are occurring during this forecast period. CPC considers El Nino conditions to exist when sea surface temperatures are about 1<sup>o</sup> F higher than normal. Currently sea surface temperatures are running in the range of 1.25<sup>o</sup> to 1.8<sup>o</sup> F higher than normal. The majority of forecast models suggest that El Nino will continue to develop and reach moderate strength this fall. Additional model forecasts indicate that there will be continued development of El Nino into the winter potentially resulting in a strong El Nino event (2.7<sup>o</sup> F above normal sea surface temperature). However based on current observations and trends, it is thought that El Nino will at least peak out as a moderate strength El Nino event this winter.

Considering the forecast for a moderately strong El Nino event this winter what can we expect here in Florida? El Nino events in Florida during the winter are generally characterized as winters with below average mean winter air temperatures. This is in large part to increasing cloudiness and above average rainfall expected during an El Nino winter. Based on these observations, the CPC has



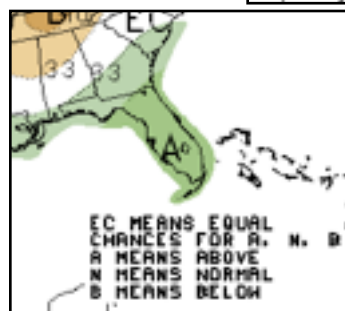
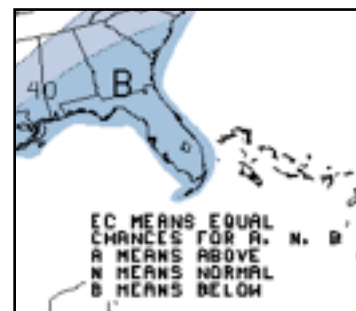
**2009-10  
Winter  
Weather  
Outlook**

Winter weather in Florida is greatly influenced by

sea surface temperatures in the equatorial Pacific ocean. This is commonly referred to as El Nino/Southern Oscillation or ENSO. The Climate Prediction Center (CPC) of the National Oceanic and Atmospheric Administration (NOAA) provides climate outlooks based on the current phase of the ENSO.

The latest forecast from CPC indicates that a weak El Nino condition continues to develop in the Pacific Ocean. This is that above aver-

Three month outlook for temperature probability (Dec 09 - Feb 10).



Three month outlook for precipitation probability (Dec 09 - Feb 10).

forecasted for Florida, below average mean air temperatures and above median rainfall for this winter. One interesting note in the forecast is, that based on El Nino and other climate conditions, it is also forecasted that above median rainfall is predicted for the period of June 2010 to November 2010.

### ***Preparing Groves for the Winter***

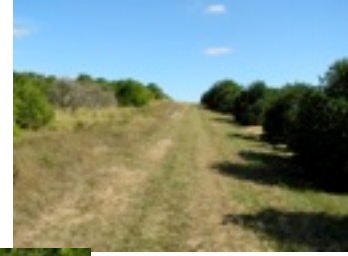
It has been said that Florida has 2 seasons, summer and winter, well we are approaching the end of summer and now is the time to shift gears to slow citrus vegetative growth and stimulate cold acclimation in citrus trees. Some of the following suggestions are to insure that your grove and trees are in the best possible shape to handle potential freezing temperatures this winter. Good grove condition was certainly evident during last winter where some groves that had been neglected or lacked proper production care received significantly more damage than well cared for groves experiencing the same minimum temperatures.



Weeds compete with citrus trees for water and nutrients and can overgrow young trees if not controlled. During the winter it is

recommended that weeds in the row be kept at a minimum. This allows for the even distribution of irrigation and more effective cold protection using microsprinklers irrigation.

Vegetative ground cover in row middles should be mowed. Low



mowed row middles store more heat during the day for release at night than heavily vegetative row

middles. Heavily vegetative row middles will also impede cold air drainage in the grove. When mowing row middles at the end of the summer, especially in tangerine blocks, be aware that plant bugs can and do migrate out of row middle vegetation into trees stinging fruit, potentially resulting in a significant amount of fruit drop.

Check and service your irrigation system including



emitters, pumps and filters. Nothing will ruin your night more than a clogged irrigation filter and 35°F air temperatures, and this is definitely not the time to be cleaning plugged emitters. Power units need to be serviced and operating properly. Here is my personal favorite, the “Murphy switch” goes

bad and shuts down the pump during a freeze. Check fuel levels in power unit tanks if applicable. I realize that this one may not be as straightforward as in the past with all the fuel thefts occurring in groves. Don't forget about the power units on wind machines.

Pruning of citrus trees, specifically Valencias, in the fall has become more common. Try to schedule pruning late enough in the fall to avoid a vegetative growth flush that would require psyllid and/or citrus leafminer control. Some recent research indicates that fall hedging done prior to bud induction may minimize some yield reductions seen when pruning later in the fall and early winter. Avoid any severe pruning in the late fall as this, coupled with cooler temperatures, will limit new growth leaving the canopy open to freezing temperatures in the winter.

Citrus nutrition can play an important role in cold acclimation of citrus. Although there has not been any single nutrient identified as having a significant affect on cold hardiness of citrus; it is important to note that trees that lack adequate nutrition could be more susceptible to freeze damage. Check your leaf analysis from this past summer and implement any adjustments into your fall fertilizer application.



Citrus pest management can affect the susceptibility of citrus trees to freezing temperatures. Spider mites can cause significant defoliation in the winter leaving the canopies open to freezing tem-

peratures. Poor summer greasy spot control can also result in significant defoliation and an opening up of the citrus tree canopy. Generally any citrus pests that affects canopy density can have an influence on the susceptibility of citrus trees to freeze damage.



## ***Pesticide News and Information***

### **EPA Settlement Affects Florida**

In late-August, the Environmental Protection Agency announced it will develop numeric nutrient standards for Florida waters over the next two years as a result of a consent decree filed in the U.S. District Court for the Northern District of Florida (Florida Wildlife Federation v. Johnson, N.D. FL, No. 4:08-CV-324, 8/19/09).



The proposed consent decree sets out the Agency's commitment to developing the standards it determined in January were necessary and is meant to settle a lawsuit filed by five activist groups in July 2008. The existing standard was a descriptive one that was written to prevent pollution levels that would cause an imbalance in naturally occurring flora and fauna.

EPA said it would propose numeric nutrient water quality standards for lakes and flowing waters in Florida by January 2010 and issue final standards by October 2010. It will propose standards for the state's estuarine and coastal waters by January 2011 and finalize them by October 2011.

In the announcement, EPA stated that the consent decree reflects commitments made by EPA in its January 2009 Clean Water Act Determination that numeric nutrient standards are necessary in Florida. The standards are necessary to protect Florida waters from the impacts of nitrogen and phosphorus pollution.

Since the beginning of the year, scientists from EPA and the Florida Department of Environmental Protection (DEP) have collaborated in the collection and analysis of data and information necessary for the development of scientifically defensible new numeric nutrient [water quality] standards for waters in Florida. The Florida DEP had started its own rulemaking on the issue and proposed rules with nutrient criteria for streams and lakes in June. The Florida DEP released an August 21 statement saying it was considering whether it would be prudent to continue that rulemaking. "Over the last 10 years, Florida has invested thousands of staff hours in development of numeric nutrient criteria. Florida has made a tremendous investment to collect and analyze the data necessary to define how nutrient enrichment affects the biological health of our surface waters. To ensure that there is no duplication of work, we will continue to work with EPA in the same manner they have worked with us as they develop the criteria."

The agricultural sector is believed to be the source of much nitrogen and phosphorus pollution - but the EPA's authority to regulate agriculture is limited. The Clean Water Act does not allow EPA to require permits for runoff from irrigation and storm water from farms, although states may choose to control those forms of runoff to meet federal water quality standards. EPA sets permitting requirements to control pollution from such sources as sewage treatment plants and urban storm water runoff and also has authority to

develop regulations for concentrated animal feeding operations. (USDA OPMP email, 8/25/09).

### Bed Bug Registry Available

I thought the explanation for the increase in bed bugs was interesting (in the last paragraph).

A new web site, [www.bedbugregistry.com](http://www.bedbugregistry.com), is a useful tool to see up-to-date information from recent attacks at hotels and other locations around the country. The web site depends on visitors to report their bed bug experiences, sometimes even divulging the exact room number where the attack occurred. The site lists bed bug attacks by city, area, hotel name, and even provides a new email alert sent to your personal website address when addresses near you report bed bugs.



In reviewing the site, there are well-known hotels in large cities that charge top dollar for their rooms that have reported recent bed bug attacks. Some report problems in college student dorms, apartments, hospitals, and condos, along with the date of the attack and how the management staff did (or did not) handle the complaint. A map shows the area where the building or hotel is located along with a list of nearby sites that have been identified with bed bugs.

For those who are new to bed bug attacks, the little red brown insects hide in mattresses, bedding, or headboards and usually bite humans at night. The bites are characterized as red welts that itch and burn and can be found all over your body after a night's sleep. Getting rid of the bed bugs can be difficult. The web site offers sugges-

tions on how to be aware or rid yourself of bed bug outbreaks.

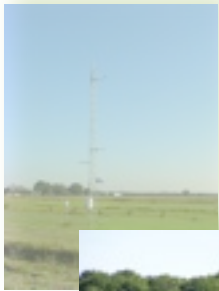
Bed bugs were largely controlled by the use of pesticides like DDT (chlorinated materials), as well as organophosphates and carbamates. But after all these pesticides have been banned for residential use in the nation, the problem has grown worse in the past year or two as bed bugs have emigrated back into the U.S. (Long Island Travel Examiner, 7/14/09).

### **Mustang® has Citrus Low Volume Label**

On July 23, 2009 the Florida Department of Agriculture and Consumer Services (FDACS) approved the special local needs (SLN) registration EPA SLN FL-090011 for Mustang® (zeta-cypermethrin) insecticide use in citrus at low volume to manage Asian citrus psyllid. (FDACS PREC Agenda, 9/3/09).

# 2009 – 2010 WINTER WEATHER WATCH PROGRAM

NOVEMBER 15, 2009 TO MARCH 15, 2010  
REGISTRATION FEE: \$100.00



It's once again time to register for the upcoming 2009 - 2010 Winter Weather Watch Program. Upon receiving your \$100.00 registration payment, you will be sent an unlisted telephone

number with which you can retrieve the latest **Ag Forecasts**, 24 hours a day. **Please do not give this number to others.** The *Winter Weather Watch Program* is funded by the registration fees to pay for telephone equipment rentals, long distance calls, repairs and meteorologist.



---

## 2009 – 2010 Winter Weather Watch Program

NAME: \_\_\_\_\_ Phone Number: \_\_\_\_\_

COMPANY: \_\_\_\_\_

MAILING ADDRESS: \_\_\_\_\_

CITY: \_\_\_\_\_ ZIP CODE: \_\_\_\_\_

**REGISTRATION FEE \$100.00**

PLEASE RETURN THIS REGISTRATION FORM AND YOUR CHECK PAYABLE TO:

**POLK COUNTY CITRUS ADVISORY COMMITTEE  
PO BOX 9005, DRAWER HS03  
BARTOW, FL 33831-9005**



## Annual Citrus Employee Safety Training

Polk County Extension—UF/IFAS invites you and your employees to attend the 2009 Polk County Citrus Safety Training Program.

This program is designed to help growers with regulatory compliance by providing annual safety training for their employees.

Topics for this year's training include tractor and equipment safety training, citrus canker and citrus disease identification, pesticide safety and general grove hazards.

Pre-registration is required. Completed registration forms are due in the Extension Office no later than Friday, October 30, 2009.



## Annual Tractor Rodeo

*In order to compete in the team competition, the completed pre-registration form must be received in the Extension Office by October 30th.*

This year's tractor rodeo will feature three separate competitions. Your employees can compete in the Sprayer Operator Competition, Herbicide Operator Competition and the Fertilizer Spread-Off Competition. Participants are allowed to participate as a team member or as an individual, but teams must be pre-registered to compete.

The **Sprayer Operator Competition** will test precession, safety awareness, and attention to detail required for safe pesticide applications using a tractor with a sprayer.

The **Herbicide Operator Competition** will test for the above mentioned skills on a tractor with a boom sprayer.

In the **Fertilizer Spread-Off**, operators will simulate fertilizer applications to resets scattered randomly through a grove. The operator will be provided with an all terrain utility vehicle (UTV), bucket of simulated fertilizer, and cups to apply the fertilizer. Judging will be based on precision of the fertilizer application, time, and vehicle operation skills.

For more information about any competition, contact Chris Oswalt at (863) 519-8677 ext. 108.

Prizes will be awarded for the highest placing individuals and teams.



## Citrus Scouts Training

This year, a new addition will be provided on the safety day for citrus scouts. Training topics will include equipment safety and general grove hazards, citrus canker identification, decontamination procedures and citrus greening and disease identification. The trainings will be held in separate English and Spanish sessions.

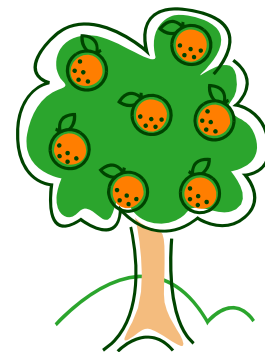
Following the trainings, an ID contest will be held for the participants.

### Scouts ID Contest

The Canker-Greening Disease ID contest will evaluate the effectiveness and speed of a scout's ability to correctly identify citrus canker and greening. Scores will be calculated as follows:

$$\begin{aligned} & \text{Time (seconds)} \\ & + \text{penalties } (\# \text{ of penalties} \times 60 \text{ seconds}) \\ & = \text{Individual score} \end{aligned}$$

The individual and teams with the lowest score will be awarded.



## Agenda

### GROVE WORKERS

- 7:30 am Registration
- 8:00 am Decontamination and Disease ID
- 8:30 am Tractor and Equipment Safety
- 10:00 am Break
- 10:15 am Pesticide Safety
- 11:15 am General Grove Hazards
- 11:45 pm Lunch (provided)
- 1:00 pm Tractor Rodeo

*Award ceremony will follow  
the tractor rodeo*

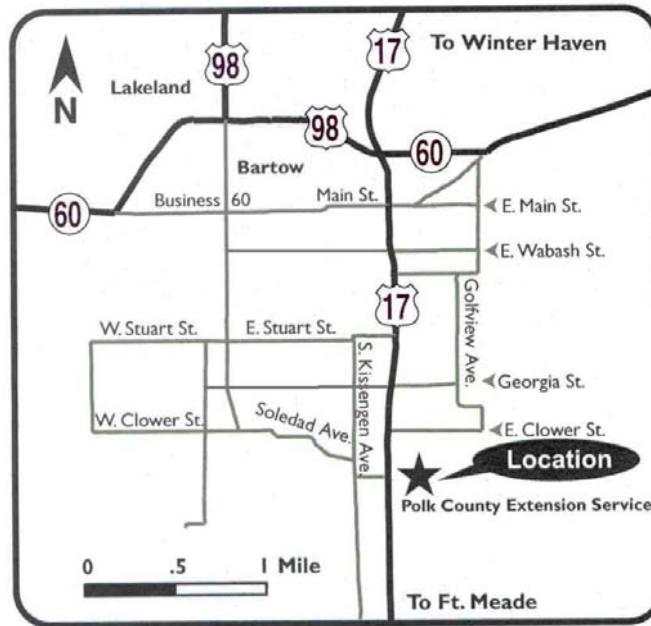
### CITRUS SCOUTS\*

- 7:30 am Registration
- 8:00 am Equipment Safety & General  
Grove Hazards
- 8:30 am Canker and Decontamination
- 8:45 am Citrus Greening and Disease ID
- 9:30 am Canker-Greening ID Contest
- 11:30 am Award Ceremony
- 11:45 am Lunch (provided)

*\*Two individual sessions will be available in  
English and Spanish*

### Speakers

- Chris Oswalt (Polk County Extension)
- Steve Futch (UF-IFAS-CREC)
- Jamie Yates (UF-IFAS-CREC)
- Ryan Atwood (Lake County Extension)
- Gary England (Sumter County Extension)
- Alejandro Arevalo (UF-IFAS-SWFREC)
- Darren Cole (UF-IFAS-IRREC)



In accordance with the provisions of ADA, auxiliary aids and services will be provided upon request with a 3-day notice. Contact Gail Crawford at (863) 519-8677 ext. 111.

This material available in an alternate format upon request.

The Institute of Food and Agricultural Sciences in an Equal Employment authorized to provide research, educational informational and other services only to individuals and institutions that function without regard to race, color, sex, age, handicap, or national origin.

## Citrus Safety Training and Tractor Rodeo



**Tuesday, November 3, 2009**

Polk County Agricultural Center  
Stuart Conference Center  
1710 Hwy 17/98 S  
Bartow, Florida 33830



# Citrus Worker Safety Training Program Registration

*This registration and a fee of \$15 per person, which includes lunch, are due by Friday, October 30, 2009.*

*Make check payable to Polk Co. Citrus Advisory Committee and mail to Polk Co. Citrus Advisory Comm., PO Box 9005, DrawerHS03, Bartow, FL 33831*

## SAFETY TRAINING PROGRAM & TRACTOR RODEO REGISTRATION

<b>Safety Training Program</b> (Please <b>print</b> participants names)	
1.	2.
3.	4.
5.	6.
7.	8.
9.	10.
11.	12.

*All participants in the Tractor Rodeo must be registered above. **Please print names.***

<b>HERBICIDE OPERATOR</b> Tractor Rodeo Team Competition
1.
2.

<b>FERTILIZER SPREAD-OFF</b> Tractor Rodeo Team Competition
1.
2.

<b>SPRAYER OPERATOR</b> Tractor Rodeo Team Competition
1.
2.

## SCOUTS TRAINING PROGRAM & ID CONTEST REGISTRATION

<b>Scouts Training Program</b> (Please <b>print</b> participants names)
<b><u>ENGLISH</u></b>
1.
2.
3.
4.

<b>Scouts Training Program</b> (Please <b>print</b> participants names)
<b><u>SPANISH</u></b>
1.
2.
3.
4.

*All participants in the ID Contest must be registered above.*

<b>Citrus Canker-Greening ID Contest</b> (Please <b>print</b> participants names)
1.
2.
3.
4.