

St. Lucie County Extension 8400 Picos Road, Suite 101, Ft. Pierce, FL 34945-3045
772 462-1660 <http://stlucie.ifas.ufl.edu>

Treasure Coast Citrus Notes

March – 2009

Inside this Edition

- Topsin M Section 18 Cancelled
- Agri-Mek 0.15 EC Aerial Label
- New Citrus Pest
- 2009 Citrus Pest Management Guide
- Citrus Greening Symposium
- SWFREC Canker/Greening Field Day
- Mechanical Harvesting Field Day
- Return of La Niña
- Pesticide Applicator Training

Topsin M Section 18 Label

It appears unlikely that the Topsin M WSB Section 18 (Emergency Use) label for PFD control on Florida Citrus will be renewed. The Topsin M section 18 expires on March 19, 2009. In practical terms, growers who have blocks with a history of PFD and have product on hand should apply the material prior to March 19 (if timing is appropriate). Although there are alternatives, Topsin M is probably the most effective fungicide against PFD.

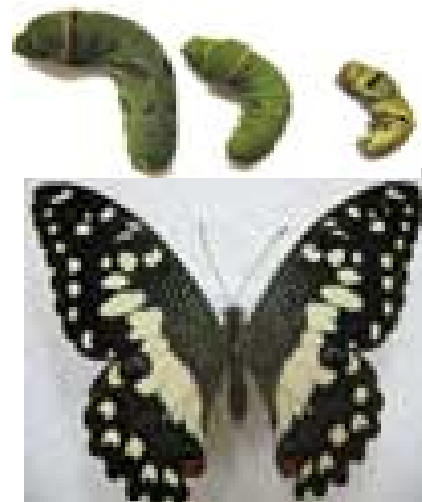
Agri-Mek 0.15 Aerial Label

A supplemental label for Agri-Mek has been issued to allow aerial application for Citrus Leafminer control only. Label conditions require a minimum of 10 gallons of water per acre be used when applied by air.

New Citrus Pest

The Lime Swallowtail butterfly has recently been found in Southeast Florida. In recent years the insect has been found in Hispaniola and Jamaica and has found its way to Florida like so many other pests. The butterfly is first cousin to our indigenous Swallowtail butterfly, which is the adult stage of the “orange dog” larvae that is so fond of feeding on young citrus trees. The larval stage of the Lime Swallowtail Citrus is similar but distinguishable from the familiar orange dog larvae. Citrus is only one of a number of favored hosts for this new insect.

http://entomology.ifas.ufl.edu/creatures/bfly/lime_swallowtail.htm



2009 Florida Citrus Pest Management Guide

The 2009 Florida Citrus Pest Management Guide, SP 043 is now in print and available from the IFAS Extension Bookstore. Cost is \$15.00 plus shipping. The new Guide can be ordered by calling the bookstore at 1-800-226-1764 or online at the following internet address:

<http://www.ifasbooks.ufl.edu/merchant2/>

Click on the Agriculture tab on the left and scroll down on the page that pops up. Add the number of copies that you will need to your "cart", submit the required credit card information and you will have your Guides in just a couple of days.

The 2009 Florida Citrus Pest Management Guide is also available online (so you can print the whole Guide or just selected sections) at:

http://edis.ifas.ufl.edu/topic_book_florida_citrus_pest_management_guide

The new guide includes several new products for Asian Citrus Psyllid control, as well as the most current recommendations for all of the citrus insect, disease and weed pests.

Citrus Greening Symposium

In order to attempt to stay as current as possible with respect to Citrus Greening disease management, a Citrus Greening Symposium at the 2009 Florida Citrus Growers' Institute has been scheduled for Tuesday, April 7, 2009 at the Stuart Conference Center in Bartow. The Symposium will feature topic areas including production systems, plant improvement, vector management horticultural responses to HLB, disease detection and spread.

Presenters will include resource individuals from UF/IFAS, USDA/Agricultural Research Service and the citrus industry. The program is sponsored by UF/IFAS Extension, the Florida Citrus Production Research Advisory Council and the Greening Research Task Force. There is a lot of research work going on at this time on Citrus Greening disease and new information that could help you make your best management decisions is being released on a frequent basis.

Attendance at the Citrus Greening Symposium will be limited to 300 persons. **Pre-registration is required**, because a generous industry supplier is going to provide lunch to participants. To get that accomplished, click on the hyperlink below to see a copy of the program, directions to the Stuart Convention Center and registration information.

<http://stlucie.ifas.ufl.edu/pdfs/citrus/2009%20Institute%20Brochure.pdf>

Citrus Mechanical Harvesting Field Day

The 2009 field day will be held on Wednesday, April 22, 2009 with the day beginning at the Southwest Florida Research and Education Center, Immokalee. A short field trip to observe mechanical harvesting equipment in operation will be followed by presentations on abscission chemicals, yield monitoring, food safety considerations and other topics. A sponsored lunch will conclude the program. All participants are asked to RSVP (pre-register so they have lunch for everyone) for the event to Barbara Hyman at hymanb@ufl.edu or call (239) 658-3461. Click on the hyperlink below for a copy of the program:

<http://stlucie.ifas.ufl.edu/pdfs/citrus/fielddaybrochure.pdf>

SWFREC Citrus Canker and Greening Field Day

Thursday, April 2, 2009

IFAS/SWFREC, Immokalee

2686 S.R. 29 N, Immokalee, FL
239.658.3400

The objective of this field day is to inform growers about the work with citrus canker and greening underway at the Southwest Florida Research & Education Center in Immokalee.

Presentations Monitor: Mongi Zekri, Multi-County Citrus Extension Agent, Hendry County

9:30 Citrus canker management (Pam Roberts, Bob Ebel, Bob Rouse, Fritz Roka)

Canker suppression

Potential of SAR's in canker management

Windbreaks

Costs of canker management

10:00 Citrus greening management (Pam Roberts, Phil Stansly, Kelly Morgan, Bob Rouse, Fritz Roka)

HLB lab & sampling procedure

Psyllid tap-sampling method, bio-control, pesticides, area-wide sprays, grove management program.

Advanced production systems (young tree establishment, and leaf nutrients in greening trees)

Evolution of symptoms & nutrient/SAR sprays

Costs associated with managing greening (surveying, psyllid sprays, tree removal & replacement, increased tree density, nutrient/SAR sprays)

11:15 Adjourn to SWFREC grove

SWFREC Grove visit

Tap sampling for psyllids

Nutrient/SAR trial

Advance production systems, close spacing in concept grove for new plantings

12:30 Lunch provided at SWFREC by AgraQuest, Inc.

Return of La Niña

I think we have all seen signs that it is going to be a long, dry spring; if we can get past the winter that we are still enduring. Sea surface temperatures along the equator in the eastern and central Pacific Ocean have cooled substantially in the last few months, marking a return to La Niña. This La Niña is expected to last at least through the remainder of the winter and spring seasons, with this climate phenomena expected to bring a warmer than normal and dry climate pattern to the Southeast U.S. during this time.

For more information on climate impacts in the Southeast, see the latest climate outlook: http://agroclimate.org/forecasts/current_climate_phase.php

Predicting the 2009 Bloom Period

In my last newsletter, I mentioned Dr. Gene Albrigo's Flower Bud Induction Overview and advisory model. At that time, I wrote that the Model perhaps indicated that we were looking at an early bloom. Well, within a week we experienced some of the coldest temperatures in a number of years and we've had one cold spell after another ever since.

This model basically utilizes the number of hours accumulated below 68 degrees to predict when our trees are going to bloom. I spoke to Dr. Albrigo this morning and he indicated that he will be updating the Model this week.

As I write this newsletter, another blast of cold air is advancing down the state. The result is probably going to be a bloom period that would have to be regarded as falling within the historic norm. In any event, to help you make your management decisions that depend on the timing of the bloom, visit Dr. Albrigo's Flower Bud Induction website:

<http://www.crec.ifas.ufl.edu/extension/flowerbud/index.htm>

Updated State Citrus Greening Map

Click on the following web address to download a current map of Citrus Canker and Greening finds in the state. It is no surprise that the Greening lab at SWFREC has a backlog of samples to be tested for suspected citrus greening as growers increase greening surveys.

http://www.doacs.state.fl.us/pi/chrp/ArcReader/CC_HLB.pdf

Certified Pesticide Applicator Training

General Standards (CORE) Training and Exam. Preparation for the General Standards Exam required for all of the Pesticide Application Categories. 2 General Standard CEU's will be offered for individuals who are current license holders (This includes Private Applicator and Ag Tree Crop). This course will be offered on March 4, 2009 and then again on April 1, 2009. **Pre-registration is required** and the cost is \$15.00. Call (772) 462-1660 for details and to pre-register.

Just for Fun

Bubba and Elwood had landed tickets on the 50-yard line for the Florida – Georgia game in Jacksonville. Midway through the first quarter, there was still an empty seat next to them. Bubba finally remarked to the man on the other side of the empty seat, “I can’t believe you couldn’t find somebody to use the ticket for this seat!” The man with the Georgia bulldog hat replied, “It’s my wife’s seat, but she died.” Bubba felt awful, and said, “I’m sorry to hear that, but you couldn’t get one of your friends to come with you?” “Nope”, the man replied, “I tried, but they all decided to go to the funeral.”

The ventriloquist was touring the Southeast and has a stop at a bar in southern Alabama. He’s going through the usual stupid redneck jokes, when a big, burly guy in the audience stands up and declares, “I’ve heard just about enough of your mouth – we ain’t all morons here in Alabama!” Somewhat afraid for his well-being, the ventriloquist starts to apologize, when the big ol’ boy interrupts him and says, “You stay out of this mister----I’m talking to that smart mouth little fella on your knee!”

And finally, a few Redneck Etiquette Tips for All Occasions:

1. Never take a beer to a job interview
2. Always identify people in your yard before shooting at them
3. Always say “Excuse me” after getting sick in someone else’s car
4. It’s considered tacky to take a cooler to church
5. Even if you’re certain that your are included in the will, it’s considered tacky to drive a U-Haul to the funeral home
6. Always provide an alibi to the police for family members

Tim Gaver, Extension Agent II - Citrus
Tgaver.49@ufl.edu

St. Lucie County Cooperative Extension
<http://stlucie.ifas.ufl.edu>

SOLUTIONS
for your **LIFE**

The Foundation for The Gator Nation
An Equal Opportunity / Affirmative Action Institution