

Citrus from the Ridge to the Valley

CENTRAL FLORIDA CITRUS EXTENSION

October 2022

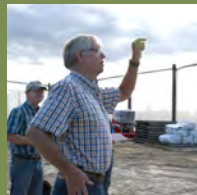
We have included some additional information on hurricane recovery services that may be applicable to you and or your operation. At this point it is a good idea to call your local USDA FSA office and basically get on their list (we have included contact information). You will be directed to a call center and provide them with the requested information. The current program through FSA specifically for tree crops is the tree assistance program for natural disasters. FSA has another program that might be applicable called the emergency conservation program. Information on both programs and others are included in the newsletter. Our best advice is to call and get on the list and document any losses you may have occurred. The folks at FSA will be able to find if there are programs that would be helpful in assisting in the hurricane recovery. If you have crop insurance, we have provided some information on handling this situation. Likely most of you have already begun this process, but it would be a good reference to have readily available.

**The Foundation for the Gator Nation
An Equal Opportunity Institution**



UF | IFAS Extension
UNIVERSITY OF FLORIDA

Chris Oswalt
UF/IFAS Extension
Polk and Hillsborough
counties
(863) 519-1052
wcoswalt@ufl.edu



Ajia Paolillo
UF/IFAS Extension
DeSoto, Hardee, Manatee
counties
(863) 251-4763
ajiacunningham@ufl.edu



Lourdes Pérez Cordero
UF/IFAS Extension
Highlands County
(863) 402-6540
lperezcordero@ufl.edu





Upcoming Events

Polk County Citrus Grower Forum

BY CHRIS OSWALT

I wanted to reach out and invite area citrus growers to the October 2022 Citrus Grower Forum to be held on Wednesday, October 26, 2022. It will begin at 11:00 a.m. at UF/IFAS Citrus Research and Education Center at 700 Experiment Station Rd. in Lake Alfred. Josh Steinbronn, Director, Research and Development and Brad Maag, Research Manager from TJ BioTech will be discussing "Oxytetracycline Injections for HLB Control in Citrus". A more detailed explanation and registration information is included in the attached Grower Forum flyer. CEU's will be available for your RUP and CCA licenses.

Citrus Employee Safety Training (new location)

BY CHRIS OSWALT

Just a reminder that we will be holding our Annual Citrus Employee Safety Training program on Thursday, November 3, 2022. Registration information is in the attached flyer. Please note that the training will not include the rodeo this year. We had to move from our normal location at the Stuart Conference Center due to the FEMA having contracted to use the facility on the date of the safety training program. We will have the safety training morning part of the program, but it will be held at the **UF/IFAS Citrus Research and Education Center's Ben Hill Griffin Citrus Hall.**

Online Citrus Seminar

Coordinator: Dr. Mongi Zekri, Multi-County Citrus Extension Agent, UF-IFAS, SW Florida

Date & time: Tuesday, 18 October 2022, 10:00 AM - 11:00 AM

Location: Immokalee IFAS Center

Title: HLB tolerant citrus varieties developed by the UF-CREC Plant Improvement Team

Speaker: Dr. John Chater, Assistant Professor in Horticultural Sciences, UF-IFAS Citrus Research and Education Center, Lake Alfred

Huanglongbing (HLB) has devastated citrus in Florida. Breeders have been working towards selecting citrus with tolerance to HLB. There exist UF/IFAS selections that appear to be HLB tolerant. This presentation will cover some of these accessions.

To register click here:

<https://ufl.zoom.us/j/96544211588?pwd=bWwzbkE0b1QvYTZCcDR0bitnWVpXUT09>

After registering, you will receive a confirmation email containing information about joining the Zoom meeting.

1 CEU for pesticide license renewal and 1 CEU for certified crop advisors

Citrus Grower Forum

Oxytetracycline Injections for HLB Control in Citrus

Wednesday October 26, 2022
11am-12pm

UF/IFAS Citrus and Research and Education Center
700 Experiment Station Rd.
Lake Alfred, FL 33850

This grower forum will feature TJ BioTech representatives Josh Steinbronn, Director of Research and Development and Brad Maag, Research Manager to discuss trunk injections with Oxytetracycline. Presentations will cover uses of ReMedium TI and FLeXInject injection devices to consistently deliver efficacious amounts of Oxytetracycline HCl for HLB suppression.

Topics include:

- Review of ReMedium TI Section 24c Label
- Equipment
- Injection Method
- Review of Efficacy and Residue Data
- Q&A Session



RUP and CCA CEUs
will be available

ReMedium TI is currently under a Special Local Needs review with the Florida Department of Agriculture and Consumer Services. Once approved, growers will have a new tool to suppress HLB infections in citrus trees, reverse HLB's debilitating impacts on tree growth, and recover yield.

The event is free to attend, and lunch will be provided by Harrell's. Please pre-register on Eventbrite using the link below by Friday October 21, 2022

Register at: <https://growerforum102622.eventbrite.com>

The information shared during this program is not an endorsement or recommendation from UF/IFAS for specific products or methods.

For more information contact:
Chris Oswalt
UF/IFAS Multi-County Citrus Agent
863-519-1052
wcoswalt@ufl.edu

Citrus Safety Training

UF/IFAS Polk County

Nov 3,
2022



UF IFAS Extension
UNIVERSITY of FLORIDA

Annual Citrus Employee Safety Training

Polk County Extension - UF/IFAS invites you and your employees to attend the 2022 Polk County Citrus Safety Training Program. This program is designed to help growers with regulatory compliance by providing annual safety training for their employees. Preregistration is required. Please indicate if each participant would like the English or Spanish sessions. Completed registration forms are due in the Extension Office no later than **Friday, October 28, 2022**. Topics this year include:

- ▶ Heat stress
- ▶ WPS handler training
- ▶ Tractor & Equipment Safety
- ▶ PPE - Maintenance & Daily Inspection

- ▶ Food Safety
- ▶ Disease decontamination procedures
- ▶ Jeopardy review



When: November 3, 2022

Where: UF/IFAS Citrus Research & Education Center - BHG Citrus Hall
700 Experiment Station Rd. Lake Alfred, FL

Time: Check - In at 7:30am
Program 8am to 1:00pm (including lunch)

Other: English and Spanish sessions available and a core CEU for your Restricted Use Pesticide (RUP) License. For more information contact Joy Spencer at **(863) 519-1041**

An Equal Opportunity Institution. UF/IFAS Extension, University of Florida, Institute of Food and Agricultural Sciences, Andra D. Johnson, dean for UF/IFAS Extension. Single copies of UF/IFAS Extension publications (excluding 4-H and youth publications) are available free to Florida residents from county UF/IFAS Extension offices.

In accordance with the provisions of ADA, auxiliary aids and services will be provided upon request with a 3-day notice. Contact Joy Spencer at (863) 519-1041. This material is available in an alternate format upon request.

Citrus Worker Safety Training Program Registration

This registration and a fee of \$15 per person, which includes lunch are due by **Friday, October 28, 2022**

	SAFETY TRAINING PROGRAM (Please Print Participants Names)	ENGLISH	SPANISH
1			
2			
3			
4			
5			
6			
7			
8			
9			
10			
11			
12			
13			
14			
15			

Contact Name: _____

Phone Number: _____

Company Name and Address: _____

Please mail this form with your check made payable to:

Polk County Citrus Advisory Committee

Joy Spencer, UF/IFAS Extension Polk County
PO Box 9005, Drawer HS03, Bartow, Florida 33831-9005

Learn how to burn piles legally, safely and efficiently at our

Certified Pile Burner In-Person Course

Thursday, November 10th

8:30AM - 4:30PM

4509 George Blvd, Sebring FL 33875

Price:

- \$50 per person.
- Includes class materials, lunch and exam administration
- Limited to 50 participants.

Registration through Eventbrite:

- Pre-registration Required! (Sales end on Nov.8, 2022)
- Link: <https://highlandspileburner22.eventbrite.com>

Contact: UF/IFAS Highlands County Extension

- lperezcordero@ufl.edu
- (863) 402-6540



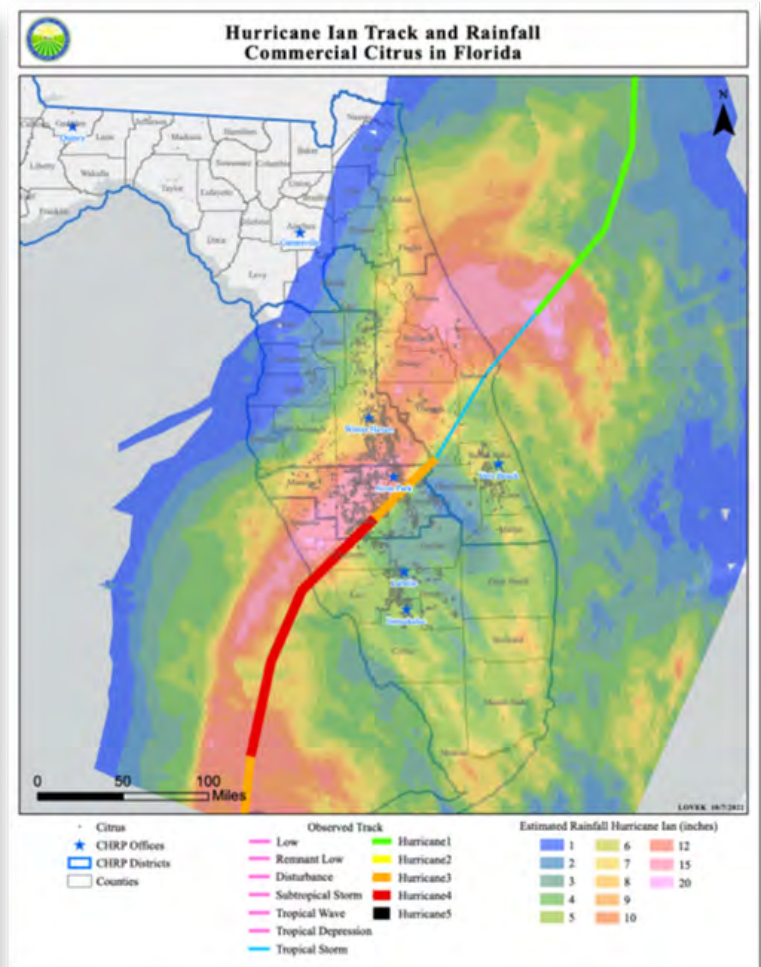
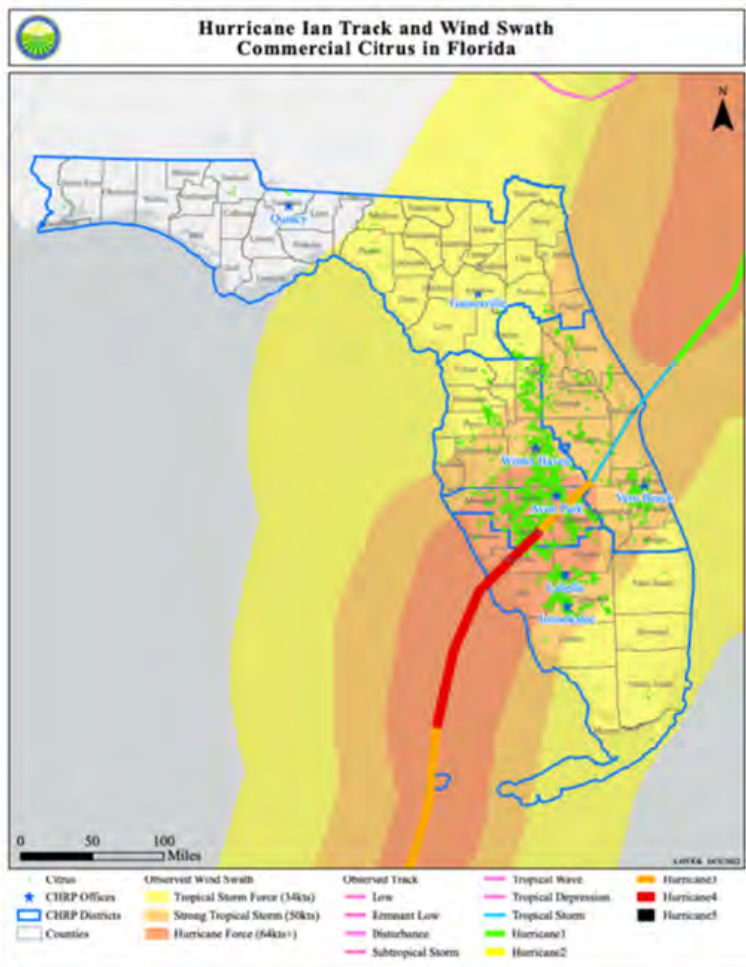
Equal Opportunity Institution

Hurricane Ian Data

BY CHRIS OSWALT

Our Florida Automated Weather Network (FAWN) field engineer, Lee Staudt, put the following table together. It shows the observation time of maximum gust winds at about 30 feet (10m) and the rainfall recorded over the Hurricane Ian storm period. Also included are a couple of graphics of the wind and rainfall affects along the hurricane track (From FDACS). This information you may find useful in collecting information on damages.

FAWN Station	Observation Time	10m Wind max/gust (mph)	Rainfall Total (in)
North Port	9/28 - 4:30pm	63.9	14.26
Arcadia	9/28 - 5:30pm	85.8	12.83
Joshua	9/28 - 6:45pm	88.5	20.29
Immokalee	9/28 - 5:45pm	63.2	4.87
Clewiston	9/28 - 7:30pm	66.6	4.48
Babson Park	9/28 - 9:45pm	65.7	13.18
Ft. Pierce	9/29 - 1:00am	56.7	4.03
Ona	9/28 - 11:00pm	45.1	17.75
Palmdale	9/28 - 6:30pm	60.4	5.34
Sebring	9/28 - 8:00pm	45.2	7.02
St. Lucie West	9/28 - 10:30pm	57.6	4.01



Hurricane Recovery Resources

This section of the newsletter is a collection of resources available to growers. The University of Florida has also provided recommendations on production and rehabilitative practices growers can do now and in the weeks/months to come to recover from storm damage to trees. Other resources included here are disaster assistance programs, agency contact information, and key steps to take when documenting and reporting damage. Florida Citrus Mutual is conducting a survey to collect data on damage to groves and fruit loss. Please see that information to find the link to the online survey.



The UF/IFAS Research website has resources available to assist growers with hurricane recovery. Our State Extension Specialists have provided recommendations on production practices growers can use now in their operation. New information will be posted on the website as it becomes available.

- What Growers Can Do Post-Hurricane Ian to Improve Groves
- Hurricane Damage Assessment - online survey
- Rejuvenating Hurricane - Affected Citrus Groves
- Give Ian-Stressed Trees Need a Bit of Relief with Frequent Irrigation and a Kaolin Particle Film
- Flooded Fields and Food Safety
- Assessing Tree Recovery from Hurricane Ian—We are Looking for Grower Involvement
- Phytophthora Treatments for Hurricane Damaged Groves
- Citrus Canker and Black Spot after Hurricane Ian
- Lessons Learned from Hurricane Irma
- Hurricane Preparation and Recovery in the Southeastern United States: Citrus Producers Guide
- Hurricane Preparedness for Citrus Groves
- USDA Farm Service Agency Disaster Assistance
- USDA Call Center Available to Assist Agricultural Producers with Hurricane Ian Recovery
- Florida SART - State Agricultural Response Team (flsart.org)

Hurricane Recovery Resources

Post Hurricane Practices

The following is an overview of what are the goals in post hurricane recovery and a discussion of practices to consider. There are articles by Dr. Tripti Vashisth and Chris Oswalt on horticultural practices, Dr. Megan Dewdney on fungal diseases and Dr. Lauren Diepenbrock on pest management.

Horticultural Practices to Rejuvenate Hurricane – Affected Citrus Groves

BY DR. TRIPTI VASHISTH AND CHRIS OSWALT

The following discussion based on the following table on current conditions and action to consider (Dr. Tripti Vashisth and Chris Oswalt) goes into more detailed explanations of what factors dictated which practices especially where damage is in the 25 to 75% range.

An example of how to use the table would be if a standing water condition (red circle post hurricane condition table) still exists, then there is little you can do other than wait for water to drain or help increase the rate of drainage (red circle in action to consider tables below).

If you have excessive defoliation and no water issues, then making foliar applications of spray materials (see green circles below) and no phytophthora treatment would be the suggestion.

Post Hurricane Conditions			
Condition	Excessive	Moderate	Light
Water	Standing Water	Previously Flooded	No Water Issues
Fruit Drop	75-100%	25-75%	< 25%
Defoliation	75-100%	25-75%	< 25%

Actions to Consider			
Actions	Excessive	Moderate	Light
Water	No treatment drain	Consider Phytophthora treatment	No treatment
Fruit Drop	No treatment	Consider GA	GA Treatment
Defoliation	Light soil fertilization then after expansion of new flush nutrition spray	Nutritional spray after expansion of new flush	Normal Nutrition

Unfortunately, as Hurricane Ian passed through Florida, it caused extensive destruction on the coast and inland, in both urban and rural areas. Our citrus groves had to withstand hurricane speed winds and flooding. It is no surprise that HLB-affected trees undergo a lot of stress and now Hurricane Ian has added more abiotic stress to trees. High speed winds have caused significant fruit and leaf drop. Additionally, localized flooding has created another layer of complexity.

Going forward our goal is to retain as much fruit as possible on the trees and rejuvenate trees for subsequent healthy vegetative growth. The fruit and leaves that escaped dropping during the hurricane event are still likely to drop in subsequent days. There are a few suggested horticultural practices that can be used to mitigate stress and promote growth on the trees. However, these cultural practices depend on intensity of damage and therefore, attention should be paid while making these decisions. Many decisions are dependent on the economics, nonetheless the goal of this document is to provide sufficient scientific information to make the suitable decision for your situation.

Hurricane Recovery Resources

Horticultural Practices to Rejuvenate Hurricane – Affected Citrus Groves, cntd.

BY DR. TRIPTI VASHISTH AND CHRIS OSWALT

Enhancing Fruit Retention:

To retain the fruit that is still hanging on the tree, use of 2,4-D and gibberellic acid (GA) is suggested. Both PGRs have potential to improve fruit retention and counteract 'ethylene' (the hormone that is known to cause leaf and fruit drop). Even though the hurricane has passed, the exposure to such high speed wind is likely to result in accumulation of stress, causing accelerated fruit color change (already evident in many groves) and subsequent fruit drop. In cases where the fruit drop was extensive (more than 75%), the benefit of these PGRs may not be substantial to recover the cost of material and application. Nonetheless, the places where fruit drop has been less than 50%, these PGRs may be a great resource to enhance fruit retention especially for mid and late varieties. Growers are encouraged to get GA applications done as soon as possible and preferably repeat the application. Repeated application of GA can improve fruit retention and slow down peel senescence thus increasing the chance of fruit to make it through harvest. Growers could consider making a 2,4-D application to groves (as per the material label). It is suggested that if you choose to make an application of 2,4-D as per the current label: avoid using during periods of leaf flush and make a single application between November 1 to December 31 for citrus varieties except Navels. Foliar application of potassium nitrate on mid and late varieties can also be beneficial under the current situation. Potassium nitrate can improve fruit growth and improve peel integrity.

Promoting Canopy Growth:

Excessive leaf loss with good soil moisture content is likely to induce new vegetative growth. However, the abiotic stress from the hurricane and biotic stress from HLB infection may interrupt the potential growth. Therefore, the use of GA to boost vegetative growth is suggested. However, the canopy loss should be considered before making such applications. If the canopy loss has been more than 75% then an immediate GA application may not be applicable as the sufficient interception of sprayed chemical may not happen with a sparse canopy. In such cases it will be best to wait for 4-6 weeks to allow canopy to regrow and then follow up with the GA.

In addition to use of GA to promote vegetative growth, fertilizer practices should also be considered. With the excessive rain, all the residual fertilizer from the soil has probably leached out. A light fertilization to support new growth can be beneficial. However, if the canopy loss has been extensive (more than 75%) the fertilizer rate should be adjusted accordingly, excessive fertilizer (especially nitrogen) is not good when substantial canopy has been lost (this is similar to significant pruning). In such case a light dose of fertilizer to aid growth and a follow up fertilizer in 4-6 weeks might be good.

Basically, in cases where damage to the canopy is extensive, a spoon feeding approach with nutrients and water should be taken. On the other hand, if the canopy and fruit loss has been less than 25% the usual grove practices should be followed. The groves where the fruit loss has been close to 100% the growers should still consider GA and fertilizer application to boost vegetative growth if canopy loss is moderate (25 to 75%).

Hurricane Recovery Resources

Post Hurricane Citrus Fungal Disease Management

BY DR. MEGAN DEWDNEY

In the wake of Hurricane Ian's path, we need to help our trees to recover from the damage. Stress and damage from HLB have weakened many trees so that they will struggle to come back. Part of this process is to evaluate whether groves will need additional disease management and if so, when would be appropriate. In terms of immediate disease management, groves should be evaluated for the potential for phytophthora damage. These diseases can occur on fibrous roots, tree crown, trunks, and mature fruit. The diseases are likely to be problematic in any grove blocks with a history of high propagule counts (> 10 - 20 propagules/cm²) and flooding or toppled trees. Managing phytophthora will become particularly acute where groves have had flooding or standing water for over 72 hours. After this point, the roots become damaged by lack of oxygen. After years of HLB in our groves, many have reduced fibrous root systems so losing more from flooding and disease will reduce the amount of water and nutrients the trees can take up. We observed more foot rot following Hurricane Irma so it is expected that foot rot could also be a problem, particularly in groves where the water reached the scion or there was splash of soil onto trunks of trees that were toppled but straightened.

If you are on a phytophthora program already, it is recommended you continue your current rotations but making sure your application goes out in the next 20 to 30 days. It is important to rotate products because of concerns with reduced sensitivity of the two causal organisms, *Phytophthora nicotianea* and *P. palmivora*. When selecting a product to use, keep in mind the concentration of active ingredient and quantity needed, not just the cost per volume. Also, it is illegal to use a product, like a phosphite fertilizer, not labelled as a pesticide for disease management. There are several products to choose from in the Florida Citrus Production guide that are recommended including Ridomil, Presidio, Alliette, and phosphite salts. We have also had promising results for groves with issues with *P. palmivora* from a newer product Orondis which has another mode of action. While in general, we are recommending frequent, smaller volumes of irrigation for the recovering trees, some products require extended irrigation after application. Please consult the labels for details. If you are fortunate enough to have sufficient early sweet orange fruit to be worth treating for brown rot, there are options to slow brown rot should it occur. It is too late for a phosphite application, but copper applications could be used as well as Orondis, Revus, and the premix Orondis Ultra. These newer products have the advantage of a 0-1 day PHI and can be applied by air.

We know canker spreads with hurricanes. The question is whether there should be much concern now the disease is widespread. In most cases, it is unlikely to be a major problem. Most fruit, except grapefruit, have reached a physiological stage where they are no longer susceptible to the disease. The leaves may be damaged but are likely to fall off in the spring, removing that inoculum. The largest concern is about stem lesions, particularly on young trees where scaffold limbs are being established. Stem lesions are the source of much of the early season inoculum and can ooze bacteria for up to 4 years. Canker in these situations can infect the fruit early in the season and contribute to significant fruit drop. To slow or stop this process, it is recommended to apply a plant immune stimulator, Blockade, program in early spring before the first infections occur. This will help keep canker from being an annual severe issue on a long-term basis.

Hurricane Recovery Resources

Controlling Pest Pressure after the Hurricane

BY AJIA PAOLILLO

Along with horticultural practices and disease control, growers should be monitoring for pests in their groves post-hurricane. Dr. Lauren Diepenbrock provided some suggested practices for keeping pest pressure as low as possible. Many growers utilize IPCs for protection of young trees. Unfortunately the strong hurricane winds blew these covers off of young trees and in many cases the covers are gone. If growers will be replacing the IPCs, Dr. Diepenbrock suggests to treat the tree prior to putting the covers back over the trees. This will help to knock down pests that may be feeding on the tree. Trees will be flushing after the large amount of rain we received, and the new growth is very attractive to Asian Citrus Psyllids and Citrus Leaf Miners. She suggests to treat with a foliar spray to protect the leaves on these already stressed trees. The high winds of the hurricane could also have caused an increased dispersal of some pests such as Lebeck Mealybug. She stated that recent data she has collected in the lab, indicates that the mealybug is attracted to odors produced from damaged citrus plant material. If this pest is of concern in your grove, try choosing a product that is effective for control of both the mealybug and the psyllid.

Soil drenches for young trees with products such as imidacloprid can provide control of the psyllid and leaf miner. Please refer to the [2022-23 Florida Citrus Production Guide](#) for more information on products and rates.

Disaster Assistance Programs

BY AJIA PAOLILLO

Growers have suffered major losses due to Hurricane Ian and will look to crop insurance and disaster assistance programs to cover their losses. During the days and weeks after the storm, it is critical that growers collect the information needed for these programs. On October 12, 2022, Florida Citrus Mutual hosted a meeting which was supposed to be the initial crop forecast luncheon. However, the meeting focus shifted to hurricane recovery since the storm. Attending were representatives from the USDA Farm Service Agency (FSA) and the National Resource Conservation Service (NRCS), the Florida Department of Agriculture and Consumer Services, UF/IFAS, and FEMA. Each group had resources and information available at the meeting which they also provide online. **Below are key steps that were discussed at the meeting that growers should take in assessing and reporting information on storm related damage. Even if you do not have crop insurance, these steps are still suggested to document your losses:**

- **Document all damage.** This cannot be stressed enough. Pictures are essential! Videos are not recommended as they are difficult to download and access. Whatever information you can document will be helpful. Keep receipts and invoices for services and supplies.
- **If you have not already done so, contact your crop insurance agent as soon as possible.** There will be a long line of folks needing the adjusters' services and you want to make sure you are on the list. Go over your policy to determine if there are time limitations on reporting damage. If you wait too long, your losses may not be considered eligible for the claim.

Hurricane Recovery Resources

Disaster Assistance Programs, contd.

BY AJIA PAOLILLO

- **Contact the USDA Farm Service Agency (FSA) to report damage and fruit loss.** The two programs available from the FSA are the Tree Assistance Program (TAP) and the Emergency Conservation Program (ECP). There is no production program available right now for citrus. You may already be familiar with TAP for cost share replacement of HLB affected trees or from Hurricane Irma. If you will be applying for this program for damaged trees from Hurricane Ian, you must contact the FSA and apply within 90 days of the storm. Unlike the TAP for HLB trees which can be applied for over a cumulative 6-year period of loss, the hurricane damage criteria are much more time limited. However, you can apply for TAP for both HLB and hurricane damage. For hurricane damage the work must be completed in 12 months, and growers can request an extension of up to 24 months if necessary. The TAP program allows for tree rehabilitation along with tree replacement. Please be advised though, to get cost share money for rehabilitating trees you must also have a loss in trees. The ECP is a program for debris removal and rehabilitating farmland. This program is awaiting funding, but when you contact the FSA apply for this program too. Once funding is hopefully approved, they can begin working with you. Please be advised that these programs require onsite inspections by FSA representatives. If possible do not begin working or removing trees or debris until after the inspections. They did state at the meeting they are aware that some work must be done in the grove at this time. Essential work that needs to be done to function and work in the grove should be very well documented and provided to the inspector.

Please click on these links for facts sheets on each program:

[Tree Assistance Program \(TAP\)](#)

[Emergency Conservation Program \(ECP\)](#)

The preferred method of contacting the FSA is by phone. They are very limited on staff and are in the process of hiring more people. Currently all calls are going to the main call center. You will provide your information and then be placed on the register documenting that you contacted the office. From there, your information will be routed to your local FSA office and a representative will contact you. Again, there will be many people they will need to get to but, initial contact in a timely manner is very important. If you visit an FSA office or call and speak with a representative, be sure to document the date and time of any correspondence, again for proof of contact. Below are the names and contact information for our area county FSA representatives:

County	Representative	Local Office Phone Number	Office Physical and Mailing Address
DeSoto, Hardee, Manatee	Marcinda Kester County Executive Director marcinda.kester@usda.gov Main Call Center Number: 1-877-508-8364 (8am-8pm M-F)	(863) 773-4764 Ext 2	Hardee County FSA 316 N 7th Ave Wauchula, FL 33873
Hillsborough		(813) 752-1474 Ext 2	Hillsborough County FSA 201 S Collins St Ste 201 Plant City, FL 33563
Polk		(863) 533-2051	Polk County FSA 1700 Hwy 17 S Bartow, FL 33830
Highlands	Jenny Hoover County Executive Director jenny.hoover@usda.gov	(863) 763-3345 Ext 2	Okeechobee County FSA 450 US Highway 98 N Okeechobee, FL 34972

Hurricane Recovery Resources

Disaster Assistance Programs, contd.

BY AJIA PAOLILLO

- **Contact the USDA NRCS to apply for their EQIP funding, which is their main assistance program.** Call the main office in Gainesville at (352) 338-9500. EQIP has funding available through two programs – the EQIP Emergency Assistance program and the EQIP General program. Please note that growers can apply for both types of programs. Each program covers certain practices such as fencing, pest management systems (now includes IPC's), and clearing and snagging to assist growers in their operations. If you are already enrolled in the general program and you have hurricane damage let the NRCS representative know. The practices you can get funding for will fall under the two types of programs. That is why you should apply for both programs. For example, assistance with irrigation costs falls under the general program and not emergency assistance.

Remember, it is very important to document everything. Work cannot be started until an inspection from an NRCS representative is completed. However, in this program growers can apply for an early waiver which allows them to start working in the grove before an inspection is done. The early waiver does not guarantee that funding will be provided. If you have a question about if a practice is covered under the programs, please let me know and I will try to find out the answer, or you can ask the NRCS. Be sure to think about all the types of practices you do in the grove that may be covered. Each practice category has a code which the NRCS website offers further explanations in factsheets – [click here](#). Please see the following fact sheet with more information on the EQIP Emergency Assistance program.

Another program that is available through the USDA is the Disaster Set-Aside Program. This was not discussed at the meeting, however, I did find some information online. This program seems to provide assistance to growers with existing FSA debts in counties designated as disaster areas. The program allows some payments to be set-aside and paid at the end of the loan term. For more information please speak with an FSA representative and you may [click here](#) for a fact sheet on this program.

Florida Citrus Mutual Survey

Florida Citrus Mutual is asking growers to send them information on damage through an online survey. This information is being collected in order to request disaster assistance money for our industry. Documentation of your damage is very important for assistance programs to be funded. If you would like to participate please use this link to fill out the survey

<https://www.surveymonkey.com/r/S7CVFQL>



2022 Fall Weather Outlook

BY CHRIS OSWALT

The latest NOAA 2022 fall weather outlook for temperature and rainfall has us looking at an increased probability of likely above-normal temperatures (fig 1). The rainfall outlook (fig 2) has us looking at an equal chance of above or below normal rainfall. The El Niño Southern Oscillation (ENSO) forecast is for La Niña conditions (around 91% chance) for the fall of 2022 (September-November). The forecast for after January 2023 is to have decreasing La Niña conditions (about 54% chance) towards late winter. There is a 56% chance that La Niña will transition into ENSO neutral conditions during February to April 2023.

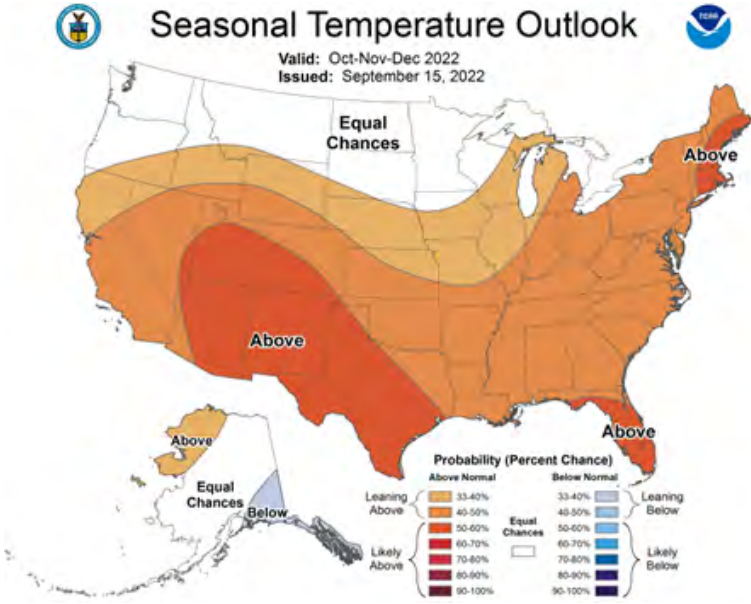


Figure 1 Fall 2022 temperature outlook

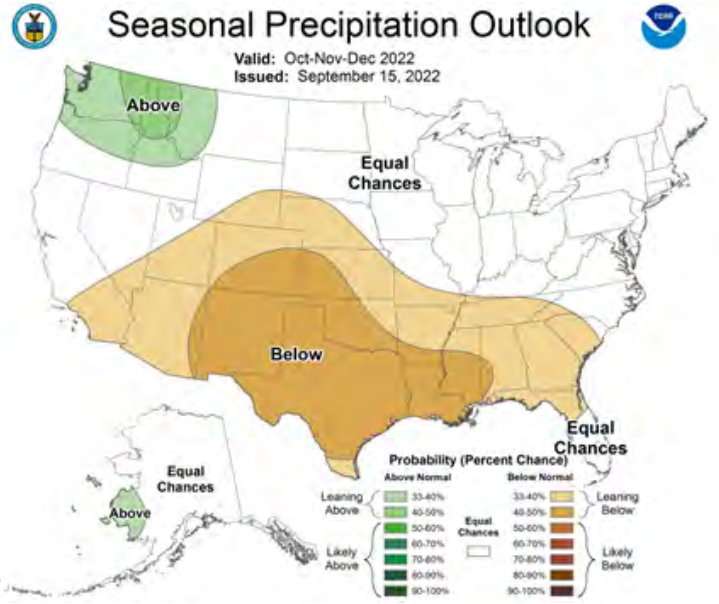


Figure 2 Fall 2022 precipitation outlook

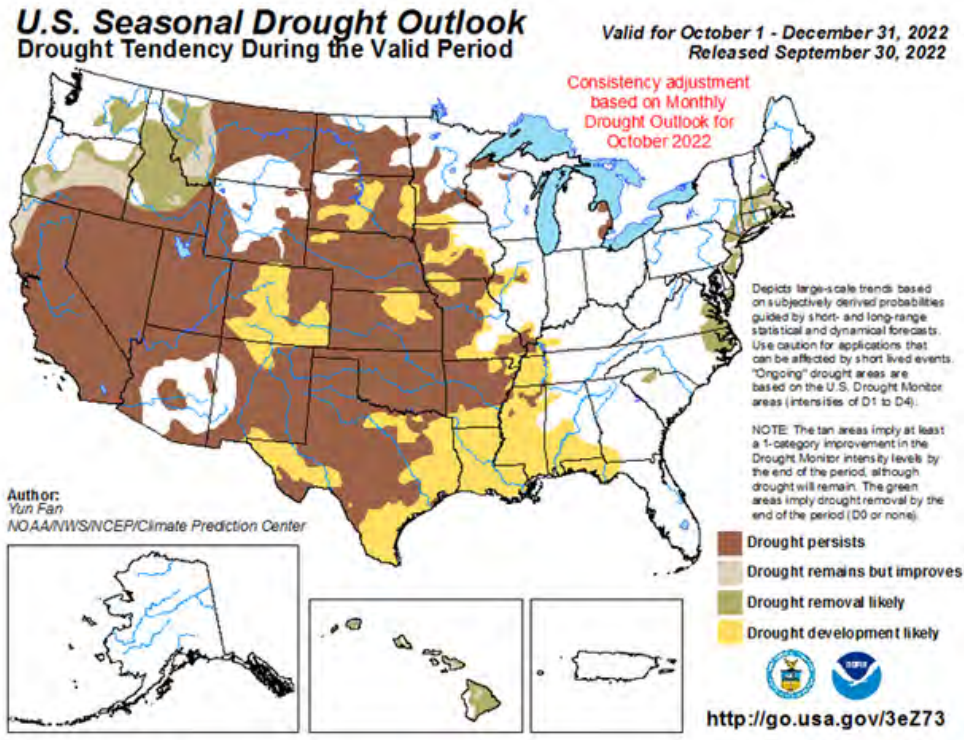


Figure 3 Fall 2022 drought outlook

Citrus Fruit Displays and Tastings

BY AJIA PAOLILLO

It is almost that time again! Come out and taste varieties showcased by UF/IFAS, the USDA, and the New Varieties and Development Foundation. Researchers are interested in your opinion of how these new varieties taste. As we know consumer acceptance and preference drive sales. These are the dates and locations of citrus fruit display and tasting event coming soon. For more information on each of these events please visit this link to the New Varieties Development & Management Corporation <http://nvdmc.org/upcoming-events/> or contact Peter Chaires at pchaires@nvdmc.org



October 19, 2022, 1:00 - 3:00 PM
UF/IFAS CREC, Lake Alfred



November 14, 2022, 9:00 - 11:00 AM
UF/IFAS CREC CREC, Lake Alfred



CRAFT Cycle 4 - Now Accepting Applications

BY AJIA PAOLILLO

Many growers participate in the Citrus Research and Field Trial program, otherwise known as CRAFT. This program was started in 2019 and is a collaborative effort with growers to plant new trees and implement various production and cultural practices in the field trials. Growers can now submit their applications online at www.craftfdn.org for Cycle 4. The deadline for applying is 5:00pm on November 30, 2022. Projects selected for Cycle 4 funding must be planted between October 1, 2022, and June 30, 2024. Please see the website www.craftfdn.org for the full list of rules and eligibility requirements.

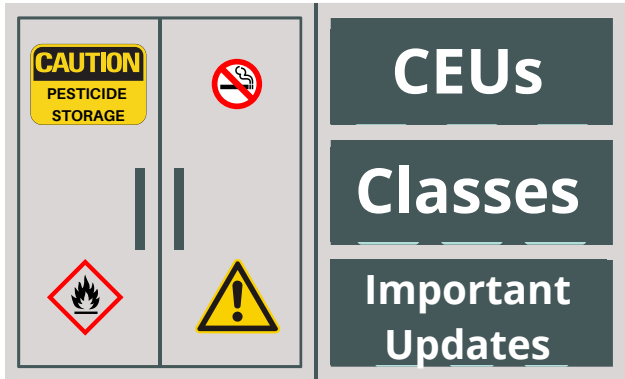
The various project topics of interest for Cycle 4 include:

- Rootstock and scion combinations - Early and Mid-Season, OLL varieties, and new scions
- Biostimulants - Evaluate impact of PGRs and hormones on fruit drop
- Pest Management - Management of other pest including Diaprepes and snails
- Resets - Evaluate additional co-factors on mature trees within reset blocks
- Plant and soil nutrition - Practices to enhance plant and soil nutrition



****Hurricane Ian Damage**** If you have an existing project in Cycles 1, 2, or 3 and you sustained damage from Hurricane Ian, please report that damage to Tamara Wood, Program Manager as soon as possible. She stated at the Florida Citrus Mutual meeting, on October 12, 2022 that they will look into how to address lost trees due to the hurricane and will provide that information to growers once they receive it.

If you have additional questions regarding the program please contact Tamara Wood, Program Manager at tamara@craftfdn.org or Tina Buice, Assistant Program Manager at tina@craftfdn.org.



The Pesticide Cabinet

Your central location for upcoming CEU workshops, pesticide license exam review classes, and more.

General Standards Core Exam Review Class

Date: Thursday November 10, 2022 **Time:** 8:30am-12:30pm

Location: UF/IFAS Extension DeSoto County
507 Civic Center Dr.
Wauchula, FL 33873

Cost: \$15/class \$26/study guide

Instructor: Ajia Paolillo

Registration: <https://corereviewclass111022.eventbrite.com>

This class will review the required information for the General Standards Core exam to obtain restricted use pesticide licenses in Florida

4 CEUs available in:

Core

Ag Tree Crop CEUs and Training

Date: Wednesday November 30, 2022 **Time:** 8am-12pm

Location: UF/IFAS Extension Polk County
1702 South Holland Parkway
Bartow, FL 33830

Cost: \$15/class

Instructors: Luis O. Rodriguez, Chris Oswalt, Ajia Paolillo

Registration: [Online using Eventbrite - Click here to register](#)

This class will review the required information for the Ag Tree Crop exam to obtain restricted use pesticide licenses in Florida

4 CEUs available in:

Private, Ag Row Crop, or Ag Tree Crop
(Max of 4 CEUs)

CEU Reminder!

Core CEU's are always available online through Citrus Industry magazine <https://citrusindustry.net/ceu>

Most of our events, both in-person and online also offer CEUs

Food Safety Event Calendar

Fall/Winter 2022

UF | IFAS Extension
UNIVERSITY OF FLORIDA



Produce Safety
ALLIANCE

Produce Safety Alliance Grower Training

A one-day course for produce growers and packers who fall under FSMA's Produce Safety Rule.

- **October 26th - Live Oak**
<https://psa102622.eventbrite.com>
- **November 1st - Dover (Strawberry Grower's Assoc.)**
<https://psa110122.eventbrite.com>
- **November 15th - Homestead**
<https://psa111522.eventbrite.com>
- **November 16th - Homestead (Spanish)**
Email: taylorlangford@ufl.edu
- **November 17th - Immokalee (Spanish)**
Email: taylorlangford@ufl.edu
- **November 18th - Immokalee**
<https://psa111822.eventbrite.com>

Remote- Produce Safety Alliance Grower Training

A three-day, three-hour virtual course for fruit and vegetable growers and packers who fall under FSMA's Produce Safety Rule.

- **August 22nd-24th – Remote PSA Training**
<https://psa082222.eventbrite.com>
- **December 6th-8th – Remote PSA Training**
<https://psa120622.eventbrite.com>

Remote-HACCP for Florida Fresh Fruit and Vegetable Packinghouses

This four-day virtual course focuses on HACCP principles for fruit and vegetable packinghouses.

- **November 29-December 2nd**
Email: taylorlangford@ufl.edu

FSPCA
FOOD SAFETY PREVENTIVE CONTROLS ALLIANCE

Preventive Controls for Human Food- Preventive Controls Qualified Individual (PCQI) Training

This three-day course for those covered under FSMA's Preventive Controls for Human Food Rule

- **TBA**
Email: taylorlangford@ufl.edu

Beyond the Basics: A Hands-on Food Safety Analysis

This one-day course is targeted at those who have already attended a food safety training and are looking for a more in-depth and hands-on experience. It is not a substitute for a PCQI or PSA Grower Training for FSMA.

- **October 27th-Live Oak**
Email: taylorlangford@ufl.edu

OFRR

Sign up for an On-Farm Readiness Review

A free educational opportunity intended to prepare growers for FSMA Produce Safety Rule inspection. Participants must have taken a Produce Safety Alliance Grower Training. To sign up for an On-Farm Readiness Review, visit: www.fda.gov/ofrr.

For registration questions, contact sarahmccoy@ufl.edu.
For general food safety questions, contact UFFoodsafety@ifas.ufl.edu.

Internships and Job Opportunities



To apply scan the QR code below



Summer 2023 Internship

As an intern with Alico Citrus, you will receive an opportunity to see all components of the citrus caretaking business. This is a paid internship. You will have a designated mentor and assigned rotation throughout the organization for the summer. You will get the chance to see all aspects of our business from production to the corporation side. This internship will give you the potential to gain a diverse training along with contact to the citrus industry as well as prospective employment opportunities after college.

For more information contact: Carisa Keller, Internship Coordinator at 941-268-7495



To apply scan the QR code below or click on the application link by November 4, 2022



Summer 2023 Internship

When you are a citrus intern with Syngenta, you will gain hands-on experience in the ag industry. This is a paid internship that also provides a vehicle for work use. You will be assigned to a mentor and a territory for your summer project. You will gain experience with territory management along with pest and disease identification. The internship presents opportunities to gain sales and marketing experience, exposure to the citrus industry, as well as opportunities within Syngenta Crop Protection.

For more information contact: Zach Langford, Florida Citrus Internship Coordinator 407-212-5631 zach.langford@syngenta.com

<https://www.surveymonkey.com/r/SyngentaCitrusIntern>



Applications must be post marked or hand delivered by October 18, 2022

[Click Here](#) to view full job description and application requirements

Temporary Program Technician

Responsible for carrying out office activities and functions pertaining to the technical assistance and program support related to FSA programs at the field office level. Utilizes various types of computer systems to maintain producer data and process automated program forms and processes. Uses a high degree of initiative and judgment in planning and carrying out assigned tasks and resolving problems encountered.

Location: Polk County Farm Service Agency Office
1700 Hwy 17 South, Suite 1
Bartow, FL 33830-6630

2022 Newsletter Sponsors



**LOWER RATES
MORE CONTROL**

CERTIS
Biologicals

Kocide

Double Nickel 55
BIOFUNGICIDE

Visit www.CertisBio.com to learn more.
Lee Shekels 561.284.1998 | lshekels@certisbio.com

*Kocide 2000-O has a 48hr REI

syngenta



IqV
matholding group

AMERICOP[®] 40 DF

**COPPER HYDROXIDE
FUNGICIDE AND BACTERICIDE**

Jack Kilgore • g8trmanjek@comcast.net • (239)-707-7677
www.iqvagro.com

OMRI LISTED



Professional scouting services

Co-Ag
Services

Cobill Agricultural
Services

(352) 474-9873



We have the technology to take you where you want to go.

The Future of Farming.

POWERED BY
POLYON
Controlled-Release Fertilizer

Harrell's ProFertilizer
Growing a Better World[™]

POLYON[®] controlled-release fertilizer delivers those benefits and many more. All of which translate into the results you care about most. Visit our website today and learn more about how POLYON[®] fertilizer is made (to be better).

Harrell's
Growing a Better World[™]

www.harrells.com | 800.282.8007

Thank you for your support!

If you would like to be a sponsor, please contact
Chris Oswalt: wcoswalt@ufl.edu or
Ajia Paolillo: ajiacunningham@ufl.edu

Recognition of a sponsor does not constitute endorsement of a company or product.
An Equal Opportunity Institution