

JANUARY 2022 | VOL.22:01

Citrus from the Ridge to the Valley

CENTRAL FLORIDA CITRUS EXTENSION

January 2022

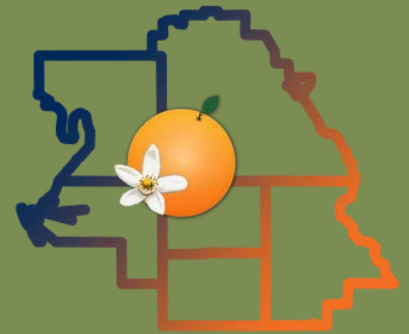
Happy New Year! This year starts off with some upcoming events we hope you will attend:

On Wednesday January 19, 2022 there will be a Polk County OJ Break at the Citrus Research and Education Center in Lake Alfred. Pre-registration is required. More information can be found on the next page of this newsletter.

On Wednesday January 26, 2022 and Thursday January 27, 2022, the Florida Citrus Show will be taking place at the Havert L. Fenn Center in Ft. Pierce. Registration information can also be found in this newsletter.

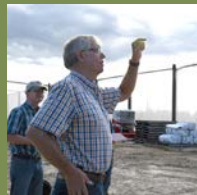
There is also a new Citrus Flower Bud Induction Advisory available. The advisory is from December 30, 2021 and the word from Dr. Vashisth is that this year all citrus producing counties have accumulated more than 650 induction hours. This value puts induction in the high range for Florida this winter. You can get the model predicted bloom dates at: <http://disc.ifas.ufl.edu/bloom/model.jsp>.

The Foundation for the Gator Nation
An Equal Opportunity Institution



UF | IFAS Extension
UNIVERSITY OF FLORIDA

Chris Oswalt
UF/IFAS Extension
Polk and Hillsborough
counties
(863) 519-1052
wcoswalt@ufl.edu



Ajia Paolillo
UF/IFAS Extension
DeSoto, Hardee, Manatee
counties
(863) 251-4763
ajiacunningham@ufl.edu



Lourdes Pérez Cordero
UF/IFAS Extension
Highlands County
(863) 402-6540
lperezcordero@ufl.edu



January 2022 OJ Break

Citrus root distribution as related to initial planting, nutrition and soil pH

The discussion by Dr. Dewdney will review some of the current observations on problems associated with the initial planting of citrus trees. Followed by a discussion on the distribution of citrus roots at various depths within the soil profile of HLB affected citrus trees as related to nutrition and soil pH. Implications would be useful as we try to enhance the uptake of soil applied inputs. CEU's for Certified Crop Advisors will be requested.

The OJ Break will be held on Wednesday January 19, 2022, beginning at 11:00 a.m. at Ben Hill Griffin Auditorium at the UF/IFAS Citrus Research and Education Center, 700 Experiment Station Rd, Lake Alfred, Fl. Lunch is sponsored by Mark White and InTerra and registration is required by Friday January 14th at: <https://www.eventbrite.com/e/january-2022-polk-county-oj-break-tickets-241315149107> or by contacting Gail Crawford at 863-519-1042 or dorothy@c@ufl.edu.



January 26–27, 2022 • Havert L. Fenn Center, Ft. Pierce Florida

We kick off the year with the Florida Grower Citrus Show. This event will be held in person at the Havert L. Fenn Center in Ft. Pierce on January 26th & 27th, 2022. There will be CEU's available for Ag Tree Crop and Private during the educational sessions given during the show. If you are interested in this event and learning more about new varieties of fruit, rootstocks, irrigation management, soil health, and citrus nutrition in the HLB-era, make sure you pre-register online at <https://www.citrusshow.com/>. The registration fee starts at \$35.

2022 Winter Weather Outlook

BY CHRIS OSWALT

The latest NOAA 2022 winter weather outlook for temperature and rainfall has us looking at an increased probability of likely above-normal temperatures (fig 1). The rainfall outlook (fig 2) has us looking at likely below-normal chance for rainfall. The El Niño Southern Oscillation (ENSO) forecast is for La Niña conditions for the balance of the 2022 winter (around 95% chance). The forecast for the spring is to transition into ENSO-neutral conditions (about 60% chance). So, we continue with La Niña conditions which are, on average, usually warm and dry winters with plenty of sunshine (fig 3). The stronger development of these La Niña conditions seem to historically bode well for a lower probability of sever freezes during these conditions.

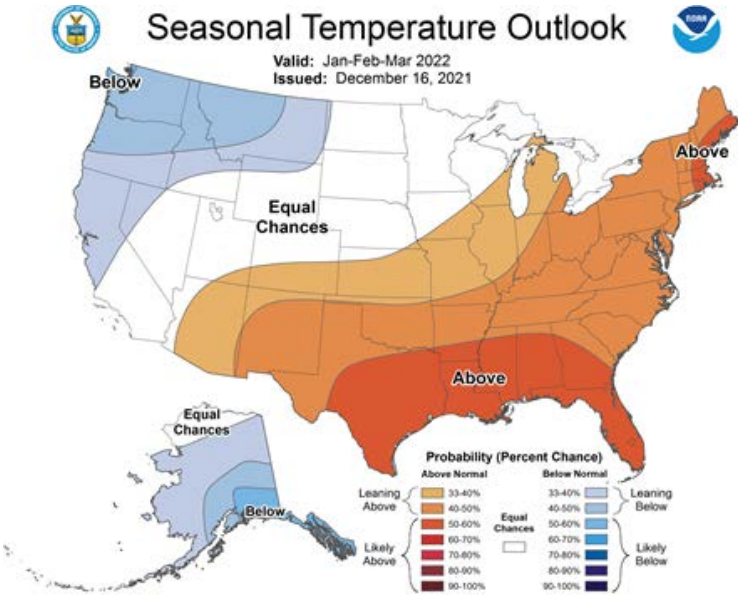


Figure 1 Winter 2021-22 temperature outlook

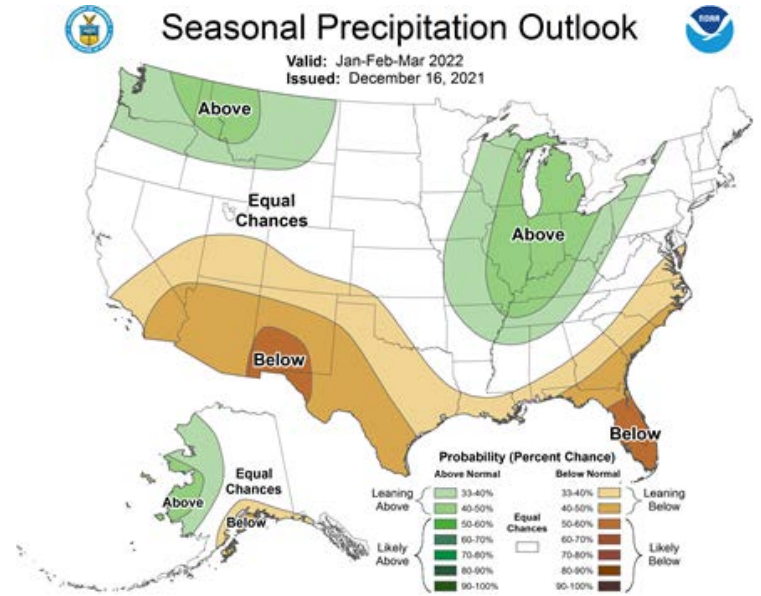


Figure 2 Winter 2021-22 precipitation outlook

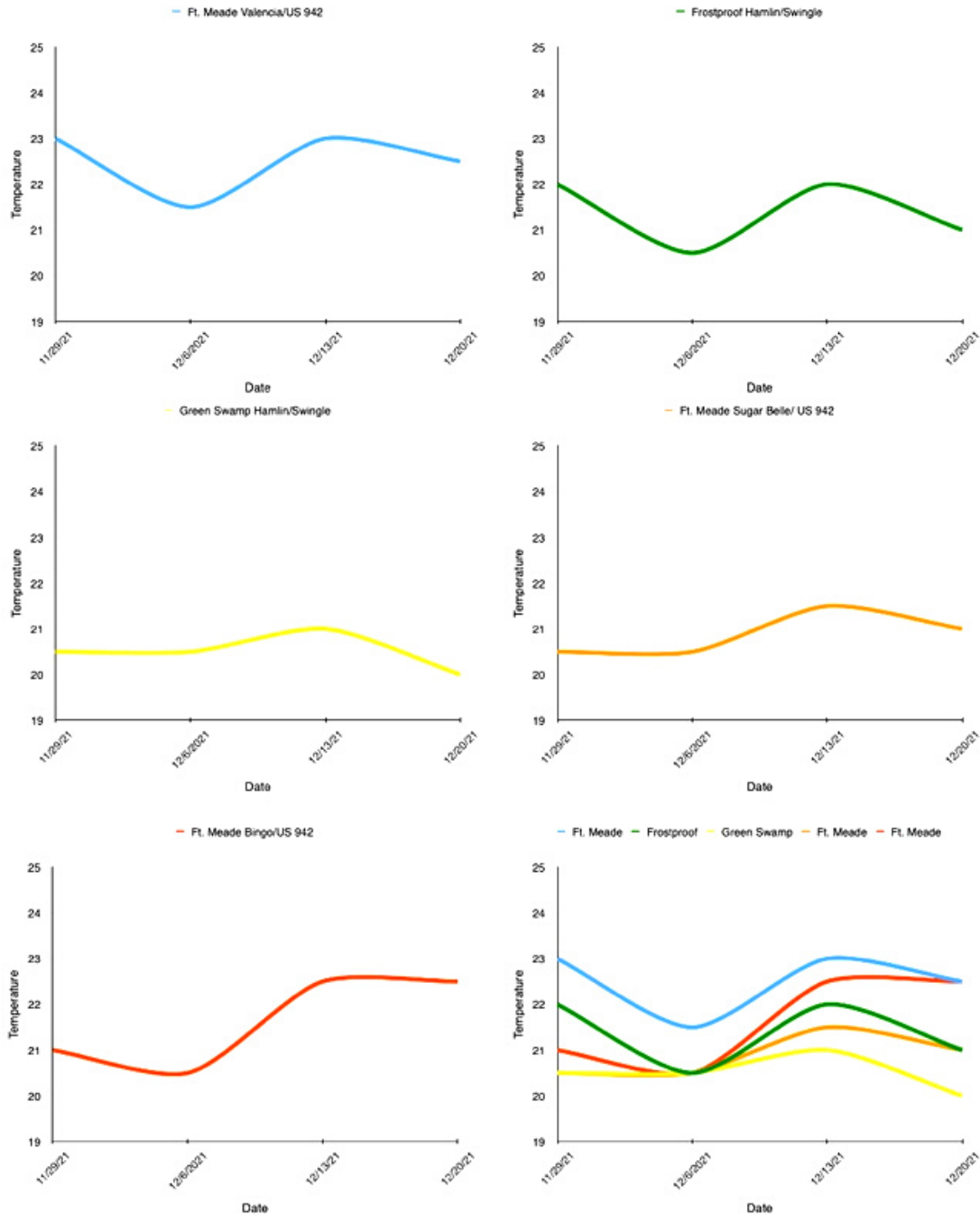


Figure 3 Winter La Niña weather pattern

Citrus Leaf Freezing Point Temperatures

BY CHRIS OSWALT

Once again, we are providing citrus growers with information related to the acclimation of Florida citrus tree to freezing temperatures. This information is available by subscribing to the Winter Weather Watch program or by visiting the Florida Automated Weather Network (FAWN) website (https://fawn.ifas.ufl.edu/tools/coldp/crit_temp_select_guide_citrus.php). This information contains acclimation information on some of our newer varieties like SugarBelle and Bingo along with Hamlin and Valencias. We also have incorporated some of the newer rootstocks in our determinations of leaf freezing temperatures. The following graphs contain data collected to date and gives you an idea of the ever changing acclimation that has occurred this winter with the variety and rootstock combinations.



Importance of Scouting and Timing Pest Management

BY LOURDES PÉREZ CORDERO

We finally made it to the beginning of 2022, and it's time you begin scouting your groves. Florida's climate is ideal for pests that affect citrus throughout the year, making timing pest management crucial. Scouting your grove is a critical practice that may help you detect pests early in their life cycle or identify symptoms on the trees that may indicate their presence. While monitoring your field, you must pay attention to the weather conditions, flush availability, age of trees, etc. But remember, not all insects present in the field are pests. Keep an eye out for pollinators and beneficial insects!

The emergence of Spring and Summer flush benefits Citrus leafminers (CLM), increasing their population. The larvae of these insects make tunnels on the surface of leaves that can become entryways to the canker pathogen, especially during the rainy season. Therefore, soil systemic insecticides on young non-bearing trees should begin two weeks before leaf expansion. Only foliar applications are available for the management of bearing trees. These target emerging larvae and should be applied at least two weeks after budbreak. Rain probability should be considered when spraying in the Summer to avoid leaching and contamination of the environment and nearby water bodies. On the other hand, the parasitoid *A. citricola* attacks CLM larvae and pupae, mainly throughout the second half of the year.

The population of the Asian Citrus Psyllid (ACP) also increases when trees begin to flush. Compared to mature leaves, the younger ones (flush) are preferred by adults because they are more suitable for egg-laying. ACP can transmit the bacterium associated with Citrus Greening by feeding on the tree. Keep in mind that adult psyllids will feed on mature leaves if flush is not available. According to the 2021-2022 Florida Citrus Production Guide, managing overwintering psyllid adults with a dormant spray prior to bloom on bearing trees can help suppress their population and reduce the need for spraying later during the year when pollinators might be abundantly present. On young non-bearing trees, systemic insecticides applied as soil drenches are the only option of chemical protection. Rotating the modes of action is critical in preventing pesticide resistance. Monitoring the population of psyllids and managing them early can be the key to success.



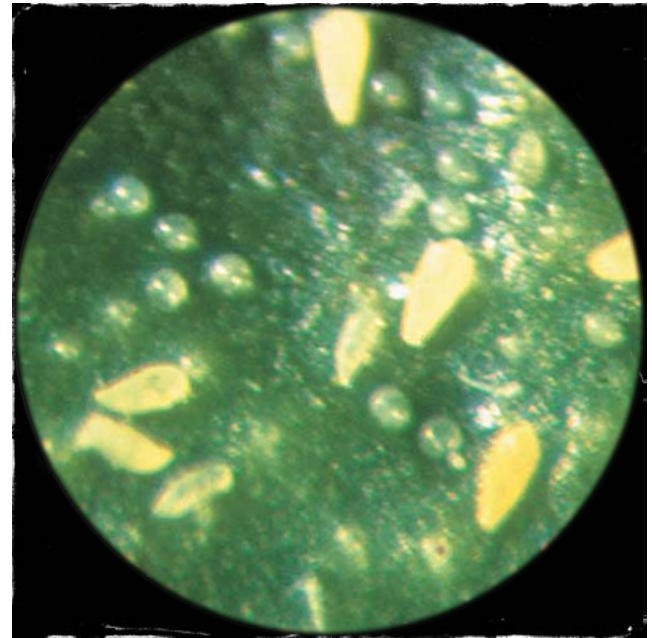
Image Credit: E. Grafton-Cardwell, UCCE



Importance of Scouting and Timing Pest Management contd.

BY LOURDES PÉREZ CORDERO

You might find rust mites, among other pests commonly found in Florida citrus. Their populations begin increasing in early May and peak around mid-July. However, they can peak again between mid-October and November. They can cause severe russetting damage on fruits depending on their population size and the maturity of the fruit. When scouting in a 10-40-acre block, select 20 trees randomly and mentally divide each one in 4 quadrants. Select 1 fruit at random per quadrant between the interior and the exterior of the canopy of each tree. Record the number of rust mites per cm² and average them for 10 acres. For processed fruit, an average of six rust mites/ cm² means that management may be needed between 10 to 14 days, while 10 mites/ cm² means that management is needed as soon as possible. For fresh fruit, the action threshold is 2 rust mites/cm² to avoid damage to the peel and reducing the quality of the fruit. Please refer to the 2021-2022 Florida Citrus Production Guide for more information on scouting for mites, management of the pests mentioned in this article, and general information of soft-bodied insects, citrus root weevil, and nematodes.



If you are interested in obtaining one of these guides, please don't hesitate to contact your local extension agent. Remember to use your Extension resources if you need help identifying or timing your management.



Update on Exam Vouchers and Remotely Proctored Pesticide Exams

BY AJIA PAOLILLO

Recently the Florida Department of Agriculture (FDACS) changed their procedure when registering for Pesticide exams. In the past, you would register online and receive one voucher number for taking one or multiple exams. Now, when you register, you will receive a separate voucher number for each exam you need to take. So, for example, if you are looking to get a Private license, you will receive two voucher numbers; one for the Core exam and one for the Private exam. In addition to this, if you fail your exam(s), you will need to obtain a new voucher number for each subsequent attempt. One voucher, one exam, one attempt! Remember to print out these voucher numbers, as they identify you on exam day. We cannot look up your voucher number for you or allow you to take the exam without it. This is the website to register for your exams <https://aesecomm.fdacs.gov/Default.aspx>. For a tutorial on "How To Get a Testing Voucher," watch the following video: https://www.youtube.com/watch?v=2DX-G_jA7fI

Pesticide exams are administered at UF/IFAS county Extension offices. Now there is another option for those who would like the flexibility of taking an exam at another location, such as at home or in the office, and at any time. FDACS and the UF/IFAS Pesticide Information Office have partnered with a company called Everblue to offer remotely proctored exams. We are excited to offer this new option for taking exams. We understand that your time is valuable, and scheduling an exam during our Extension office hours can sometimes be a challenge. At this time, there are only a few exams for Chapter 487 licenses that are available through this service: Core, Private, Aquatic, Natural Areas, Ornamental & Turf, and Right of Way. All other category exams are only available to be taken at an Extension office. We anticipate more categories being added to this service in the future.

There are some important points I would like to share with you about using Everblue for taking your exams. You must have access to a web camera and are required to have it on during the entire exam. There is a non-refundable fee of \$26.13/exam that must be paid before taking the exam. This is not a charge for the exam but a convenience fee for using the proctoring service. As stated above, you will still be required to register for your exam(s) with FDACS. Once you have your voucher number, you can choose to use the proctoring service. To schedule your exam visit the UF/IFAS scheduling page (<https://pesticideexam.ifas.ufl.edu/>, Figure 1.) to access the proctoring service or schedule an exam at an Extension office. For more information and a tutorial on scheduling your exam, please watch "Scheduling Your Pesticide Exam" <https://www.youtube.com/watch?v=8mcqcVVvF9E>. Once you choose to use the service, you will be redirected to the Everblue website. At this point, your voucher is considered used. This is important to note because if for some reason you decide not to use Everblue, your voucher is now null and void, and you will have to obtain another one for that exam. Also, be aware that you will receive an immediate pass or fail after completing the exam; however, there is a 4-day waiting period before these results are considered official. This waiting period allows Everblue to verify that the remote proctoring requirements were followed and the exam score is valid. Due to this waiting period, it will take a few days longer to receive your license than usual.

UF IFAS Extension
UNIVERSITY OF FLORIDA

Home Testing Centers and Schedules FAQ Help

Reference Materials
Your Exam Schedule
Exit Exam Scheduling

Scheduling Florida Pesticide Certification Exams

Schedule to Take Remote Online Exam

- Only the following exams can be taken remotely now:
Aquatic; Core; Ornamental and Turf; Private Applicator; Right of Way.
- Exams can be taken on a computer anywhere (for example at home, at the office, and other secure locations).
- These tests have a non-refundable fee associated with them.
- There are technical requirements that will be listed on the next page.

[Schedule Examination](#)

Schedule to Take Exam at County Extension Office

Exams are either paper or computer based at the nearest County Extension Office

[Schedule Examination](#)

Frostproof FAWN Tower Update

BY CHRIS OSWALT

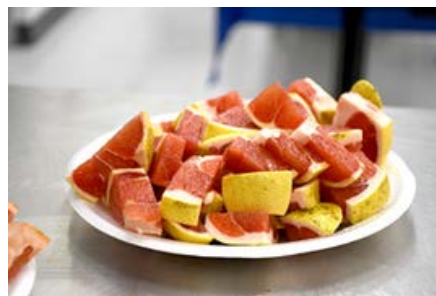
Just wanted to provide you all with an update on the installation of the new Frostproof FAWN tower. As you may have noticed the tower went offline last year due to some changes at the original location. These changes necessitated the removal and relocation of the tower to a new comparable location in the Frostproof area. Great news is that a new site has been selected and we are in the final stages of getting the tower back up online on the FAWN website (<https://fawn.ifas.ufl.edu>). Thanks to all the support we had in getting the tower relocated and back online.



Upcoming Citrus Fruit Display and Tasting

Below is the date and location of the upcoming citrus fruit display and tasting. Come out to see and taste the varieties on display and give your feedback. For more information on each of these events please visit this link to the New Varieties Development & Management Corporation <http://nvdmc.org/upcoming-events/> or contact Peter Chaires at pchaires@nvdmc.org

- February 15, 2022 - 10am: UF/IFAS Citrus Research and Education Center Plant Improvement Team



Are you interested in being a sponsor for this newsletter?

**IF YOU BECOME A SPONSOR, YOUR
INFORMATION WILL BE FEATURED IN THE
10 ISSUES OF THIS NEWSLETTER FOR 2022.**

For pricing and other information, please contact

Chris Oswalt (863) 519-1052

wcoswalt@ufl.edu

or

Ajia Paolillo (863) 251-4763

ajiacunningham@ufl.edu

or

Lourdes Pérez Cordero (863) 402-6540

lperezcordero@ufl.edu