



CHMA Sectional Mapping Program

Brandon Page



CHMA Sectional Mapping Program

- Background
 - USDA & FDACS Scouting
 - Spreadsheet
- Intent of the Sectional Mapping Program
 - Development of the Program
 - TRS locations
 - Grouping scouted groves according to TRS
 - Plotting averages onto interactive map



CHMA Homepage

www.flchma.org

University of Florida

UF/IFAS Extension

CHMA

Citrus Health Management Areas

Home About Extension Local Offices FAQ Success Stories Jobs Weather Search GO

- ▶ Citrus Research and Education Center
- ▶ Citrus Extension Home
- ▶ Entomology/Nematology
- ▶ Plant Pathology
- ▶ Horticulture
- ▶ Economics
- ▶ Food Science
- ▶ Alternative Crops
- ▶ Extension Publications
- ▶ Citrus Extension Agents
- ▶ Industry Links

Citrus Health Management Areas (CHMAs)

Creation of Citrus Health Management Areas (CHMAs) has been identified as a high priority for Florida citrus growers to slow the spread of citrus greening disease and preserve the current Florida commercial citrus acreage. The purpose of CHMAs is to encourage neighboring citrus growers to work together to combat citrus greening, particularly through the coordination of psyllid control efforts. The information found in the links below is provided to aid Florida citrus growers in establishing CHMAs in their areas.

[CHMA Overview](#) [CHMA Toolkit](#)

[Contact Information](#) [Active CHMA Websites](#)

[CHMA Sectional Mapping Program](#)

[Click Here to join the CHMA program](#)

Related Sites

- Citrus Research and Development Foundation, Inc.

Resources

- Florida Citrus Pest Management Guide
- Citrus Greening Disease
- Citrus Black Spot
- Citrus Health Management Areas (CHMAs)
- Citrus Canker
- Asian Citrus Psyllid
- Pesticide Information
- CHRP Offices and Obtaining your Grower ID Number

Search CHMAs Website

Search

© 2008 | [Contact Us](#) | [About This Site](#) | Last modified: Tuesday February 26 2013

UF UNIVERSITY OF FLORIDA



CHMA Sectional Mapping Webpage

[Home](#)

[Sign Up](#)

[Login](#)

[Tutorials](#)

[Contact Us](#)

Citrus Health Management Areas (CHMAs)



CHMA Sectional Mapping Program

The CHMA Sectional Mapping Program is intended to provide growers and industry professional with an interactive perspective of the Asian Citrus Psyllid (ACP) pressure throughout the state. ACP scouting being conducted by the USDA-APHIS and Florida Department of Agriculture and Consumer Services began in August of 2011. Over 6,000 blocks are scouted every 3 weeks throughout Florida.

The CHMA Sectional Mapping Program displays the Township, Range, and Section (TRS) of the groves being scouted by the regulatory agencies. Each TRS is unique in location and ACP pressure. The ACP pressure can change between each 3 week cycle. The ACP counts collected by regulatory agencies are sorted according to TRS and then an average is created. The average ACP count is plotted on to the interactive TRS map.


The maps will allow growers and industry professionals to identify areas within each CHMA that are under high ACP pressure. Once an area with high ACP pressure is identified, corrective action can be taken.



The CHMA Sectional Mapping Program will be updated every 3 weeks with new data. The maps begin in August 2011 and continue through the most current cycle.


- [If you have already created an account Click Here to login](#)
- [Click Here to create a new account](#)
- [PowerPoint Presentation slide for growers](#)




CHMA Sectional Mapping Dashboard


Welcome, grower  Logout

  Home

 Dashboard



Cycle Data



Presentation



Cycle Data Page

Welcome, grower



Logout



Home

Uploaded Data

Cycle Name:

CHMA:

TRS:

Mean:

Show:



Cycle Data Page

Welcome, grower



Logout



Home

Uploaded Data

Cycle Name:

CHMA:

TRS:

Mean: 2.60

Show:

Cycle	CHMA	Location Name	County Name	TRS	Data
28	Mountain Lake / Dundee CHMA	49282	POLK	29S27E12	0
28	Mountain Lake / Dundee CHMA	49283	POLK	29S27E12	0
28	Mountain Lake / Dundee CHMA	49284	POLK	29S27E12	0
28	Mountain Lake / Dundee CHMA	49286	POLK	29S27E12	0
28	Mountain Lake / Dundee CHMA	49287	POLK	29S27E12	0
28	Mountain Lake / Dundee CHMA	49293	POLK	29S27E12	0
28	Mountain Lake / Dundee CHMA	49296	POLK	29S27E12	11
28	Mountain Lake / Dundee CHMA	49297	POLK	29S27E12	11
28	Mountain Lake / Dundee CHMA	49315	POLK	29S27E12	4
28	Mountain Lake / Dundee CHMA	65231	POLK	29S27E12	0



Interactive Map

Legend

- Auburndale / Lake Alfred CHMA
- Avon Park / Lake Letta CHMA
- Babson Park CHMA
- Bairs Den CHMA
- Bereah / South Frostproof CHMA
- Brevard CHMA
- Central Highlands 17/27 CHMA
- Central Lake / North Orange CHMA
- Charlotte CHMA
- East 70 Flatwoods CHMA
- East Manatee CHMA
- East Pasco/Hernando Counties CHMA
- Ft. Meade / Alturas CHMA
- Glades CHMA
- Green Swamp CHMA
- Gulf CHMA
- Hesperides CHMA
- Indian River CHMA
- Kissimmee River Basin CHMA
- Lake Letta / Sebring CHMA
- Lakeland Highlands CHMA
- Lorida CHMA

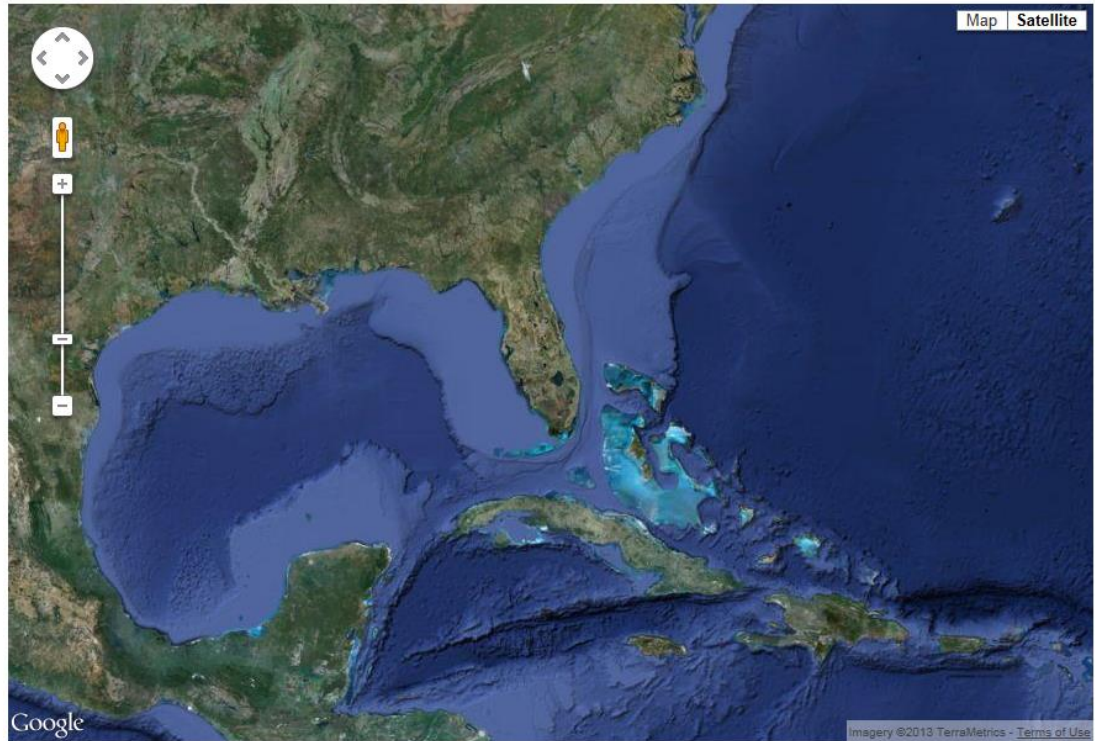
Presentations

Cycle Name:

Date Range: From: 1/28/2013 To: 2/15/2013

Cycle 27

1/28/2013-2/15/2013



Imagery ©2013 TerraMetrics - Terms of Use

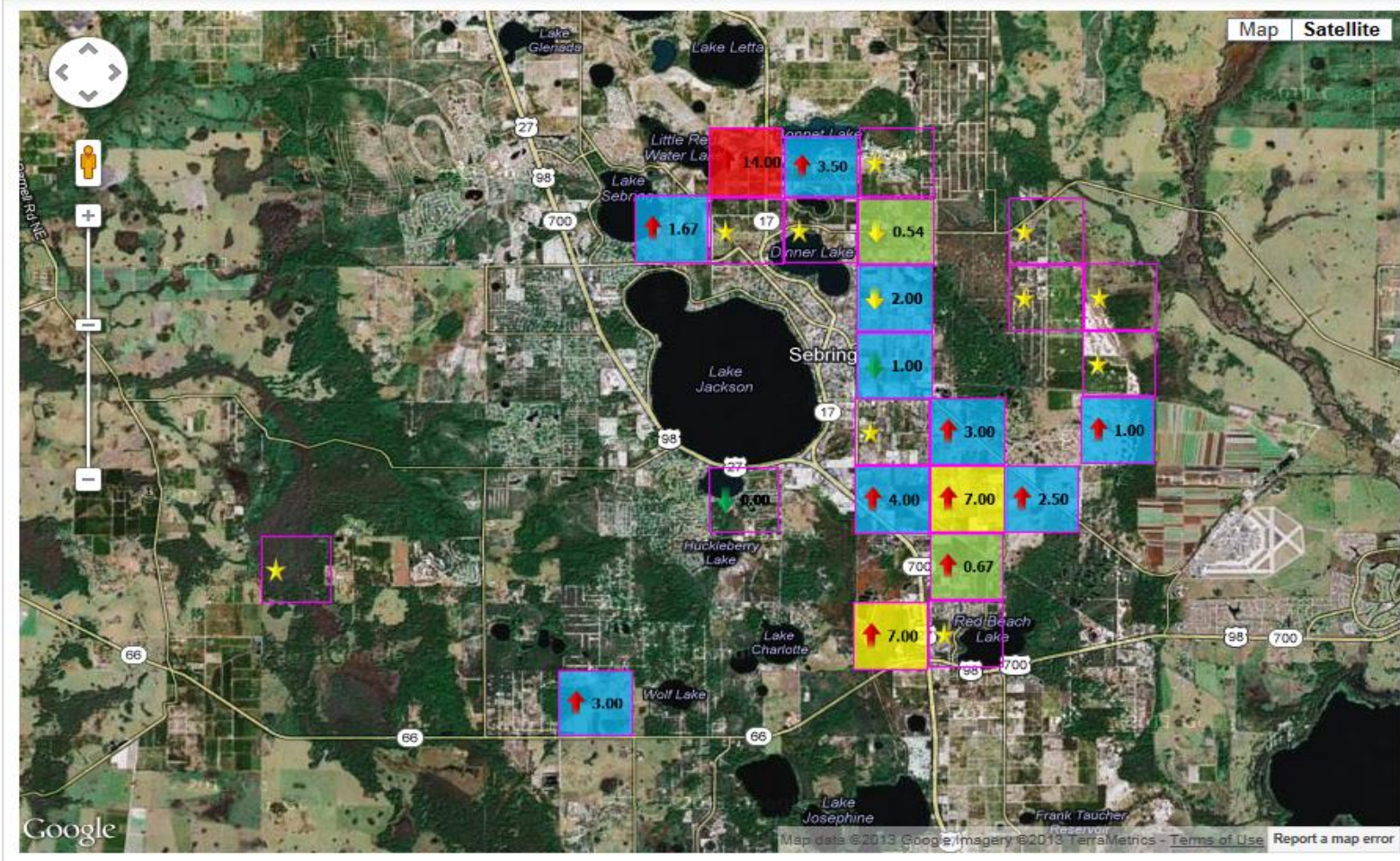
- Avon Park / Lake Letta CHMA
- Babson Park CHMA
- Bairs Den CHMA
- Bereah / South Frostproof CHMA
- Brevard CHMA
- Central Highlands 17/27 CHMA
- Central Lake / North Orange CHMA
- Charlotte CHMA
- East 70 Flatwoods CHMA
- East Manatee CHMA
- East Pasco/Hernando Counties CHMA
- Ft. Meade / Alturas CHMA
- Glades CHMA
- Green Swamp CHMA
- Gulf CHMA
- Hesperides CHMA
- Indian River CHMA
- Kissimmee River Basin CHMA
- Lake Letta / Sebring CHMA
- 34S28E13
- 34S29E07
- 34S29E08
- 34S29E09
- 34S29E14
- 34S29E16

Cycle Name:

Date Range: From: 2/18/2013 To: 3/8/2013

Cycle 28 Average Psyllids = 2.04

2/18/2013-3/8/2013





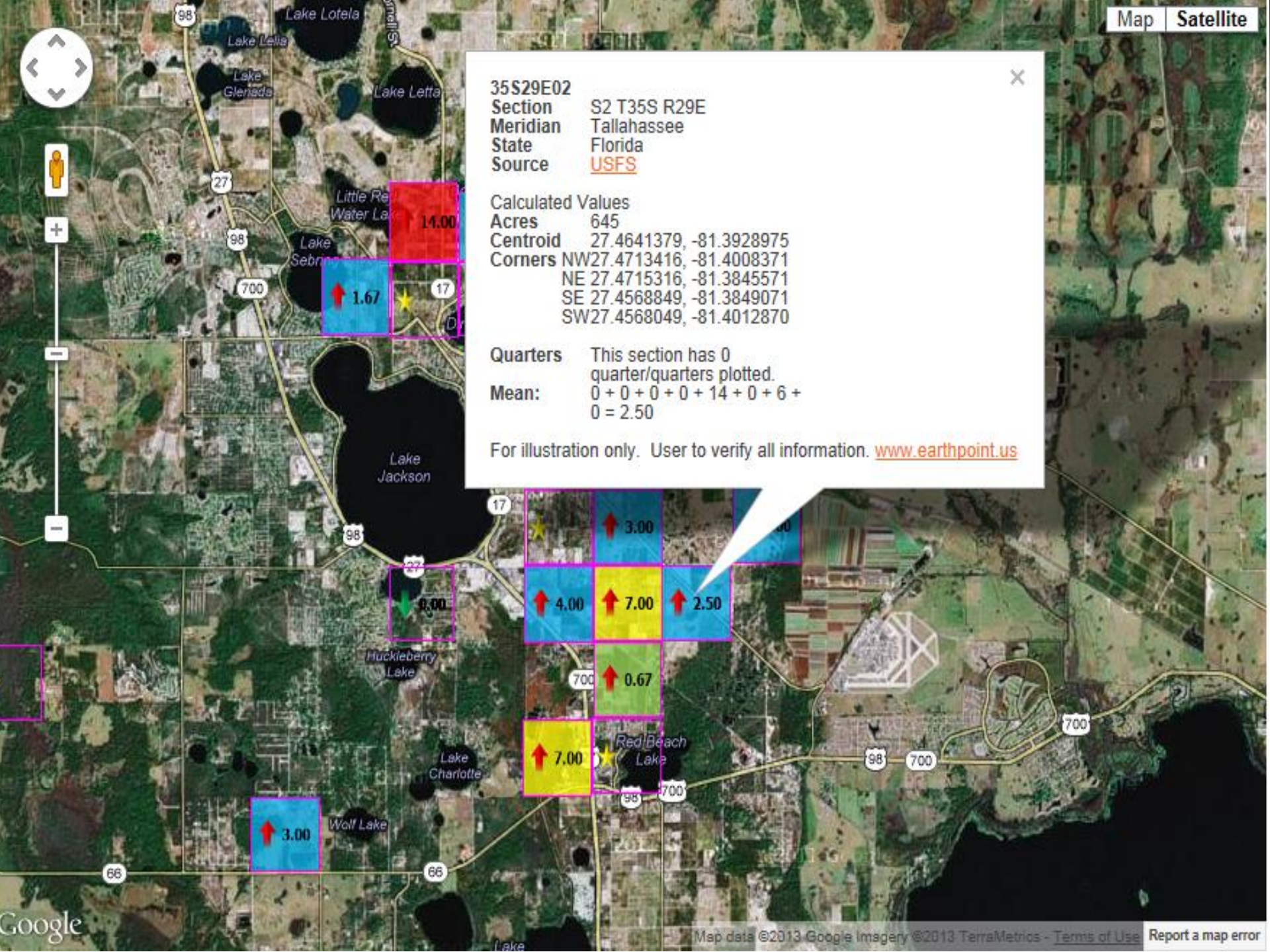
35S29E02
 Section S2 T35S R29E
 Meridian Tallahassee
 State Florida
 Source [USFS](#)



Calculated Values
 Acres 645
 Centroid 27.4641379, -81.3928975
 Corners NW27.4713416, -81.4008371
 NE 27.4715316, -81.3845571
 SE 27.4568849, -81.3849071
 SW27.4568049, -81.4012870

Quarters This section has 0 quarter/quarters plotted.
Mean: 0 + 0 + 0 + 0 + 14 + 0 + 6 + 0 = 2.50

For illustration only. User to verify all information. www.earthpoint.us





Bereah / South Frostproof Cycle 28

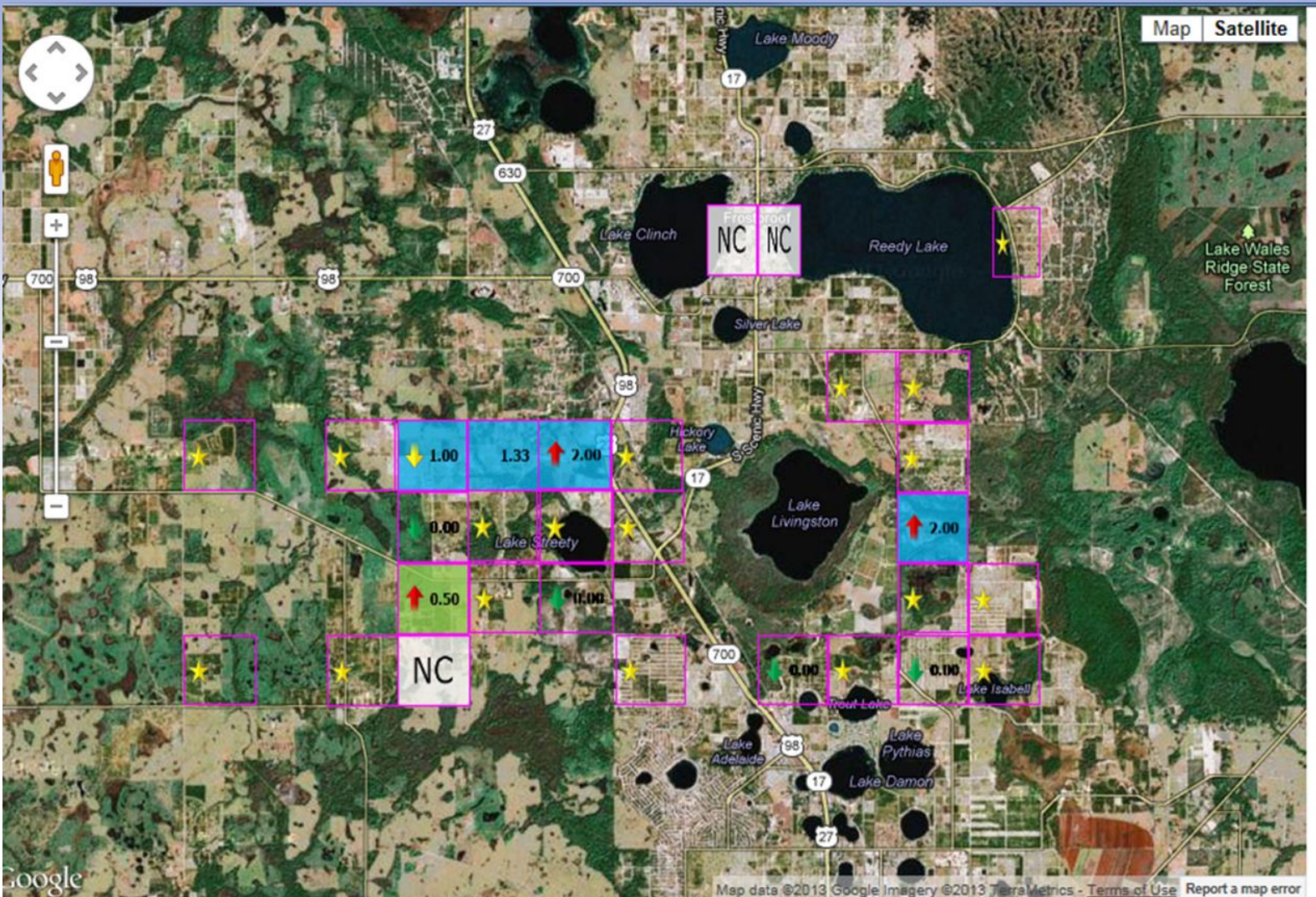
2/18/13 – 3/8/13

Average Psyllids per Section
Cycle 28 = 0.22

- 0 Psyllids
- <1 Psyllids
- 1-5 Psyllids
- 6-10 Psyllids
- >10 Psyllids

Trends Cycle

- 0 psyllids for two consecutive cycles
- Psyllids decreased to lower category
- Psyllids decrease but remained in same category
- Psyllids increased but remained in same category
- Psyllids increased to a higher category





Northeast Desoto

Cycle 28

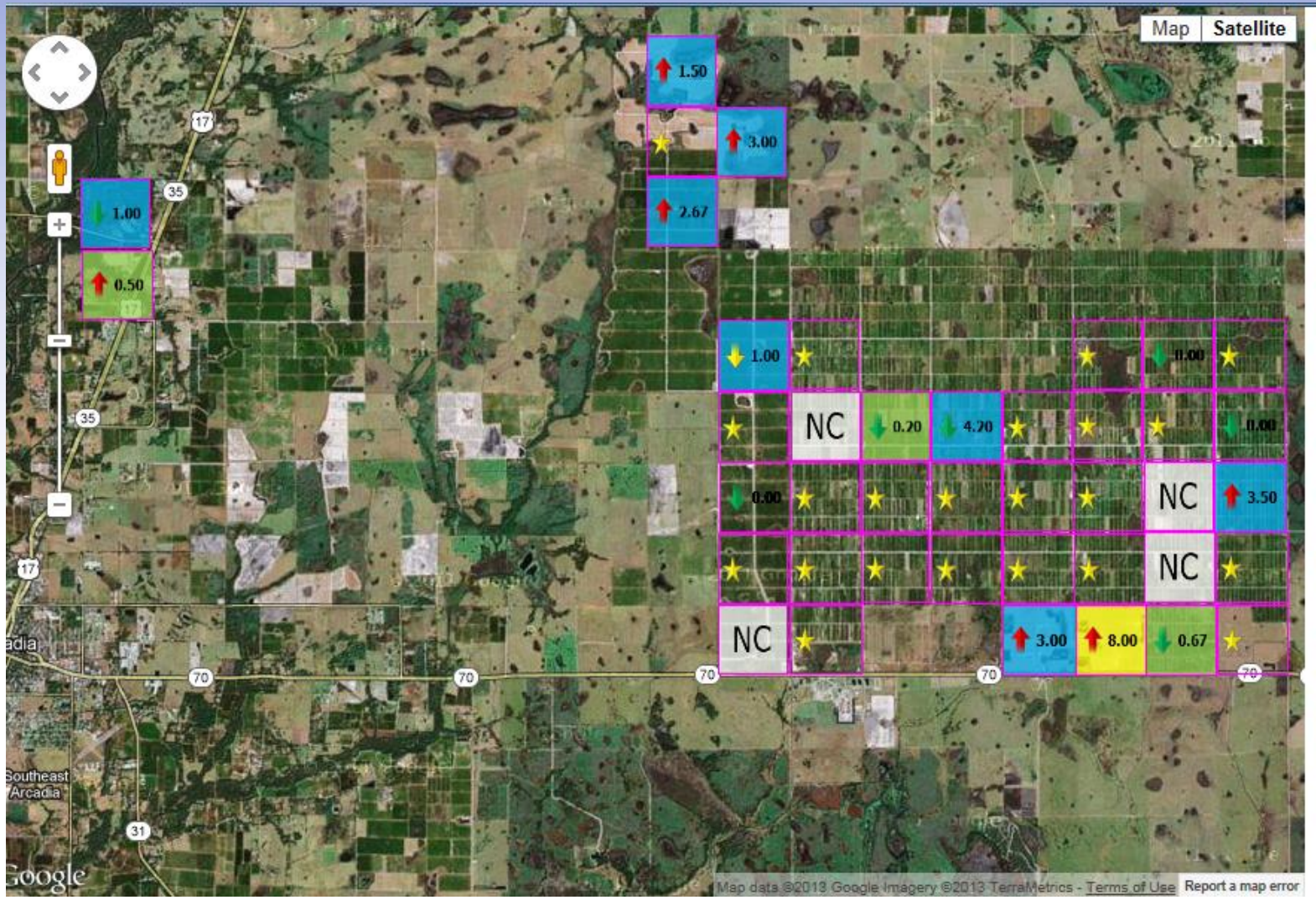
2/18/13 – 3/8/13

Average Psyllids per Section
Cycle 28 = 0.8

- 0 Psyllids
- <1 Psyllids
- 1-5 Psyllids
- 6-10 Psyllids
- >10 Psyllids

Trends Cycle

- 0 psyllids for two consecutive cycles
- Psyllids decreased to lower category
- Psyllids decrease but remained in same category
- Psyllids increased but remained in same category
- Psyllids increased to a higher category





Ft. Meade/Alturas CHMA

Cycle 9

1/16/12 – 2/3/12

Average Psyllids per Section
Cycle 9 = 2.98

- 0 Psyllids
- <1 Psyllids
- 1-5 Psyllids
- 6-10 Psyllids
- >10 Psyllids

Trends Cycle

- 0 psyllids for two consecutive cycles
- Psyllids decreased to lower category
- Psyllids decrease but remained in same category
- Psyllids increased but remained in same category
- Psyllids increased to a higher category

