

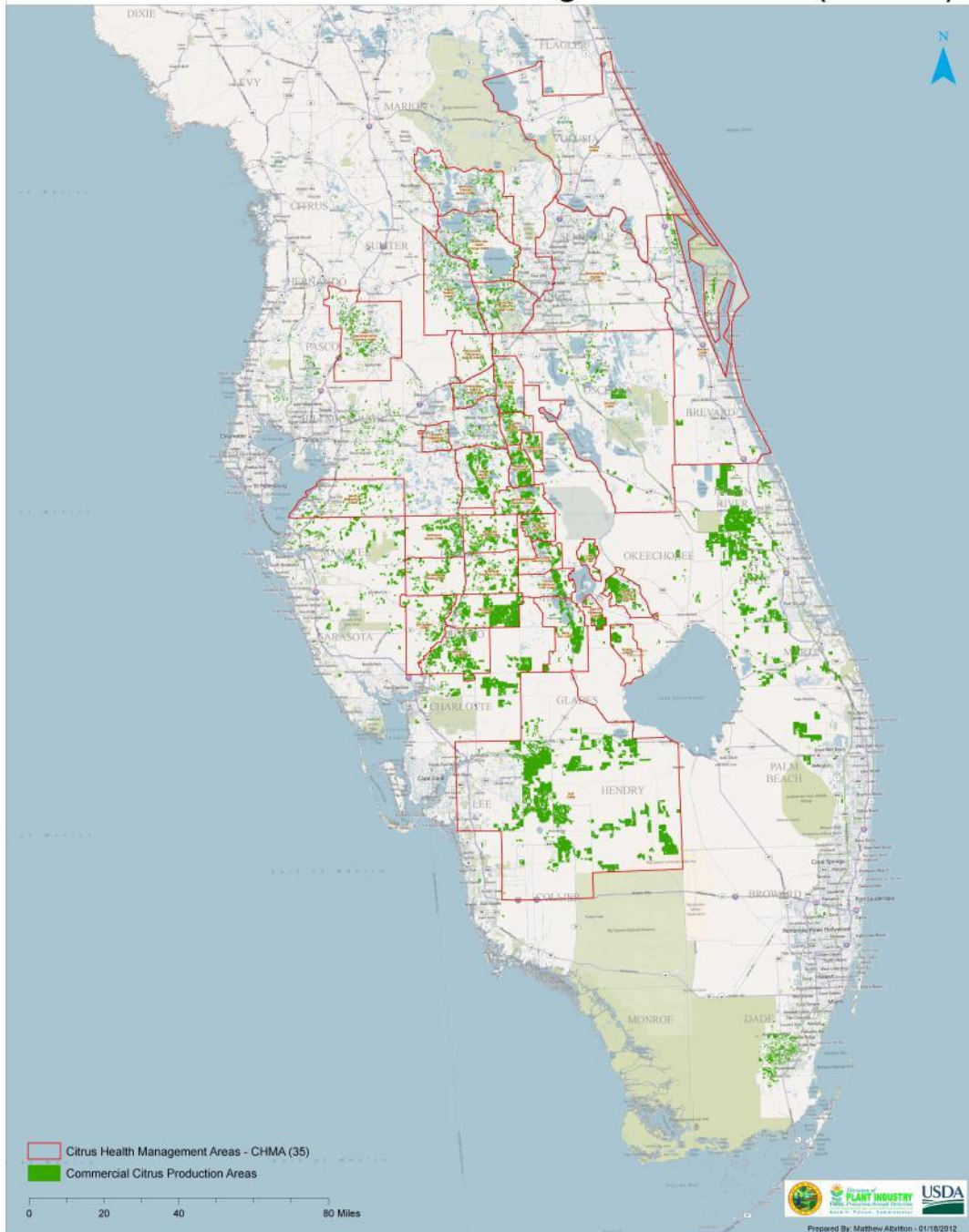
Psyllid Management in CHMAs: Results to Date

Michael E. Rogers
UF / IFAS / CREC

Is the CHMA Program Working?

- Growers have been coordinating efforts for some time
- “CHMA ACP Scouting” program began August 1, 2011
- What do the scouting results show thus far?

Statewide Citrus Health Management Areas (CHMA)

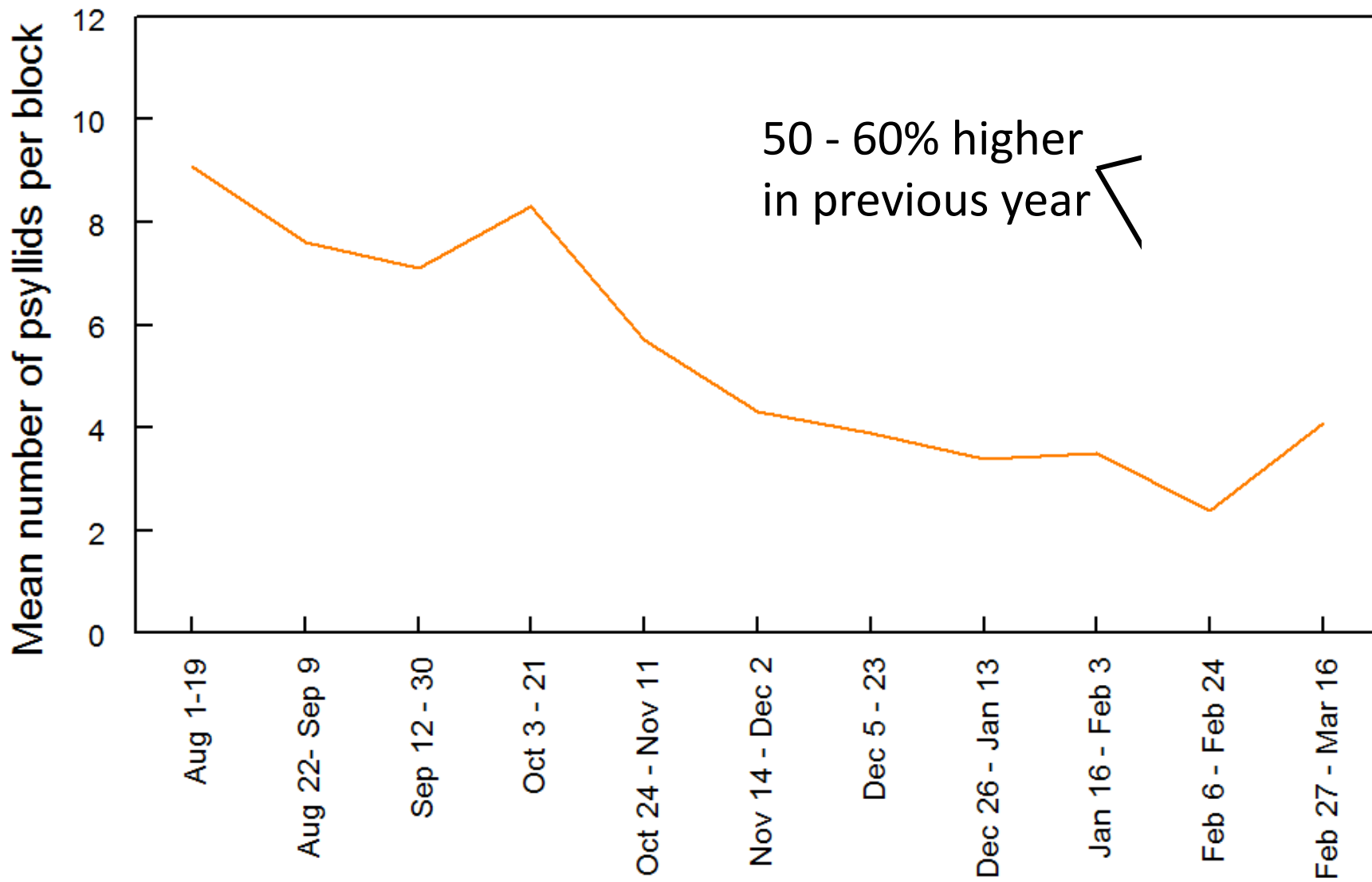


35 CHMAs statewide

426,000 + acres of
commercial citrus groves

CHMA Psyllid Scouting

(Statewide Averages)



Is the CHMA Program Working?

- Coordinated spray efforts are working!
- Statewide, at least a 50% reduction in overall psyllid populations compared to this time last year
- Results vary by CHMA depending on grower participation

Overview of ACP Scouting Results

Cycle 1
Aug 1-19, 2011

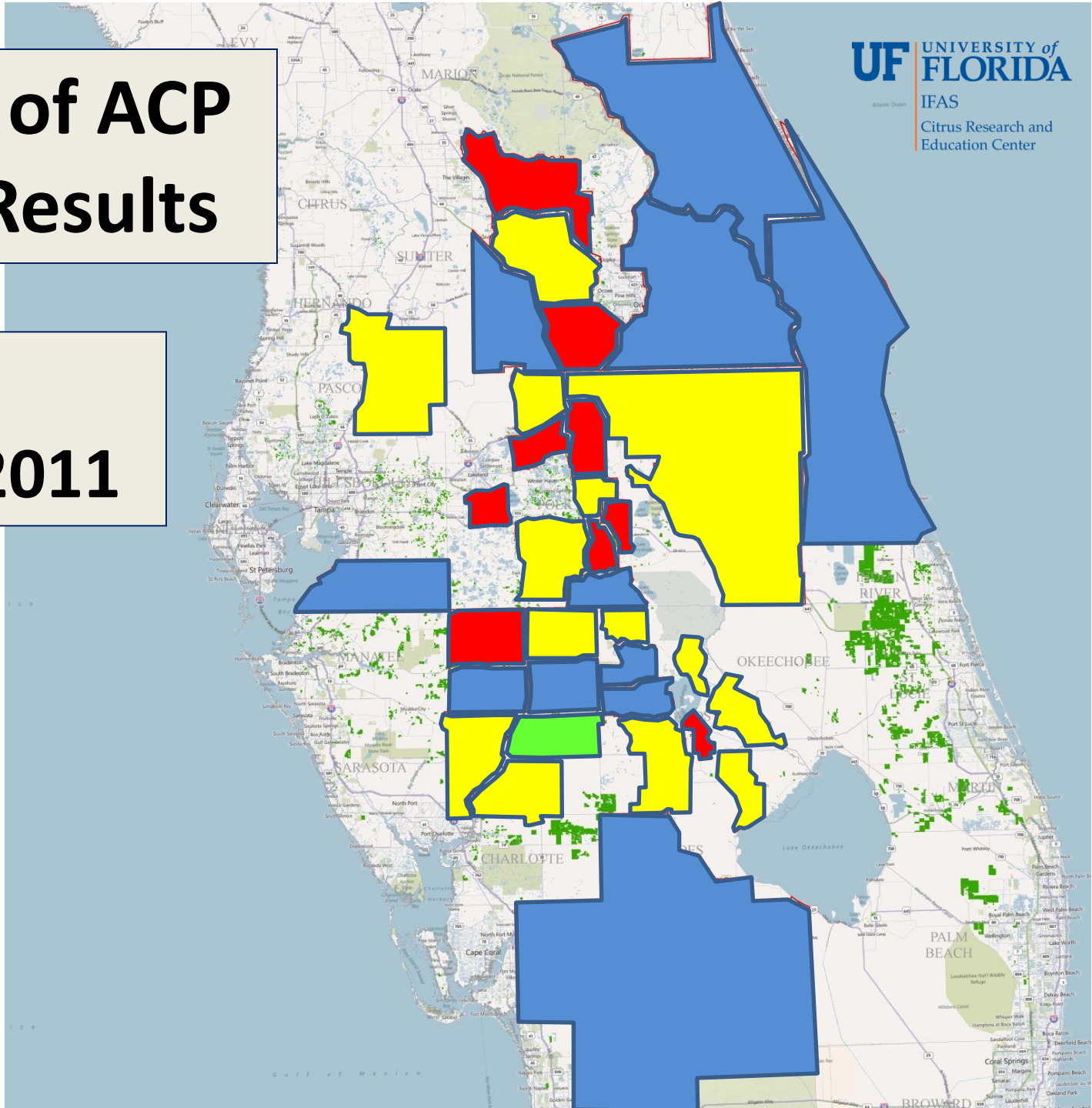
Average ACP
per block

 < 1

 1-5

 5-10

 > 10



Overview of ACP Scouting Results

Cycle 4
Oct 3 - 21, 2011

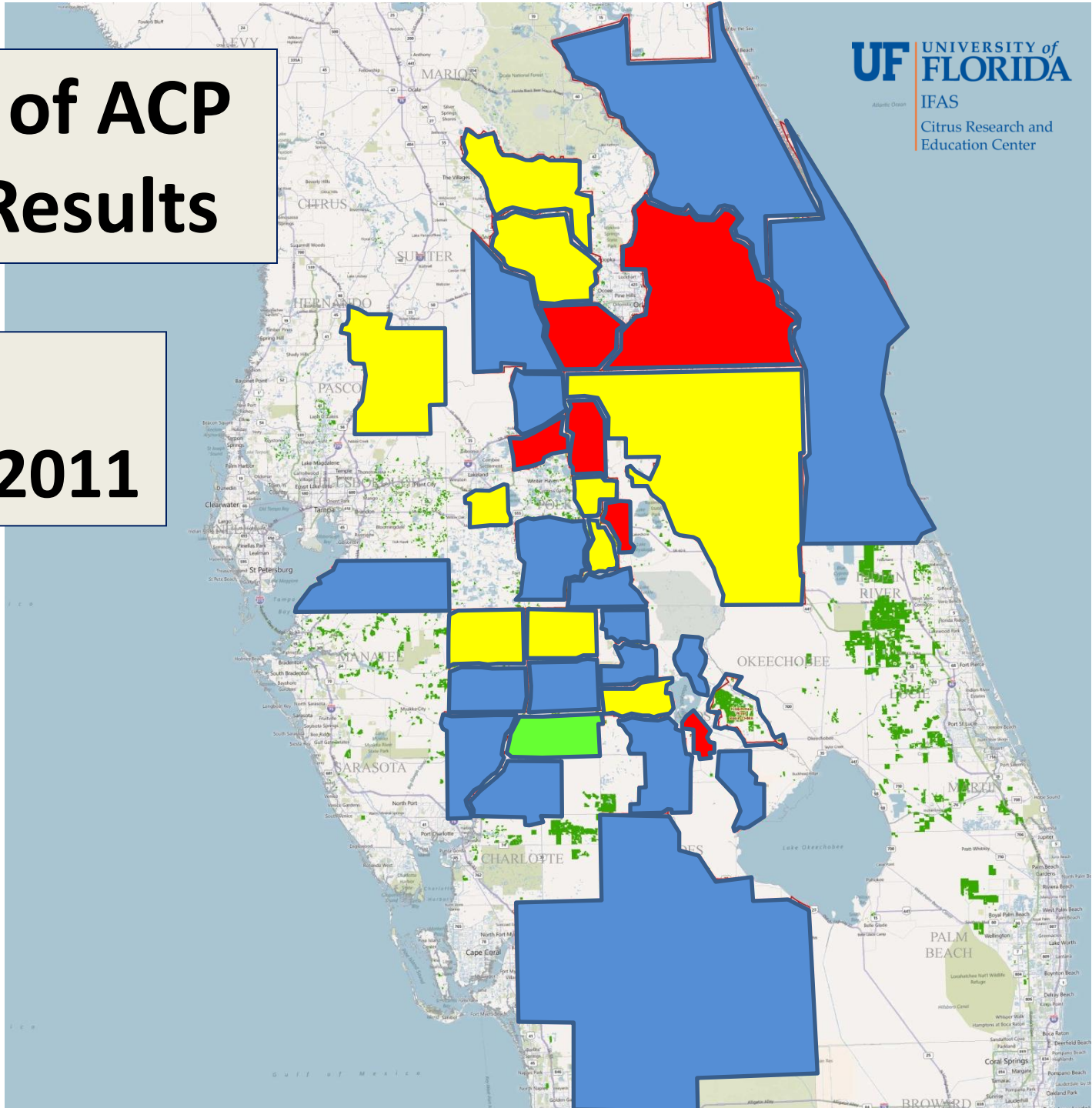
Average ACP
per block

 < 1

 1-5

 5-10

 > 10



Overview of ACP Scouting Results

Cycle 7
Dec 5 - 23, 2011

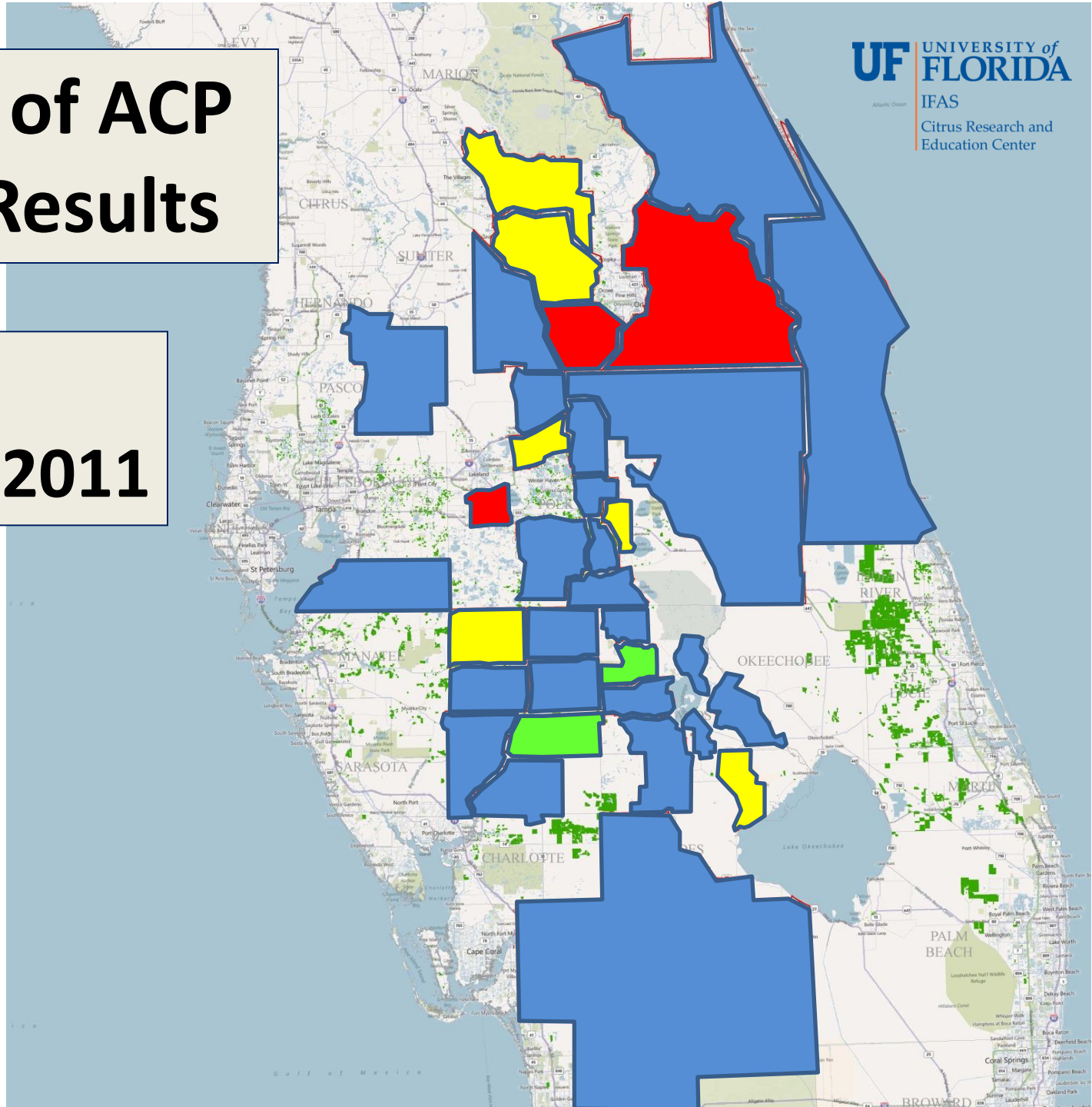
Average ACP
per block

 < 1

 1-5

 5-10

 > 10



Overview of ACP Scouting Results

Cycle 10
Feb 6 - 24, 2012

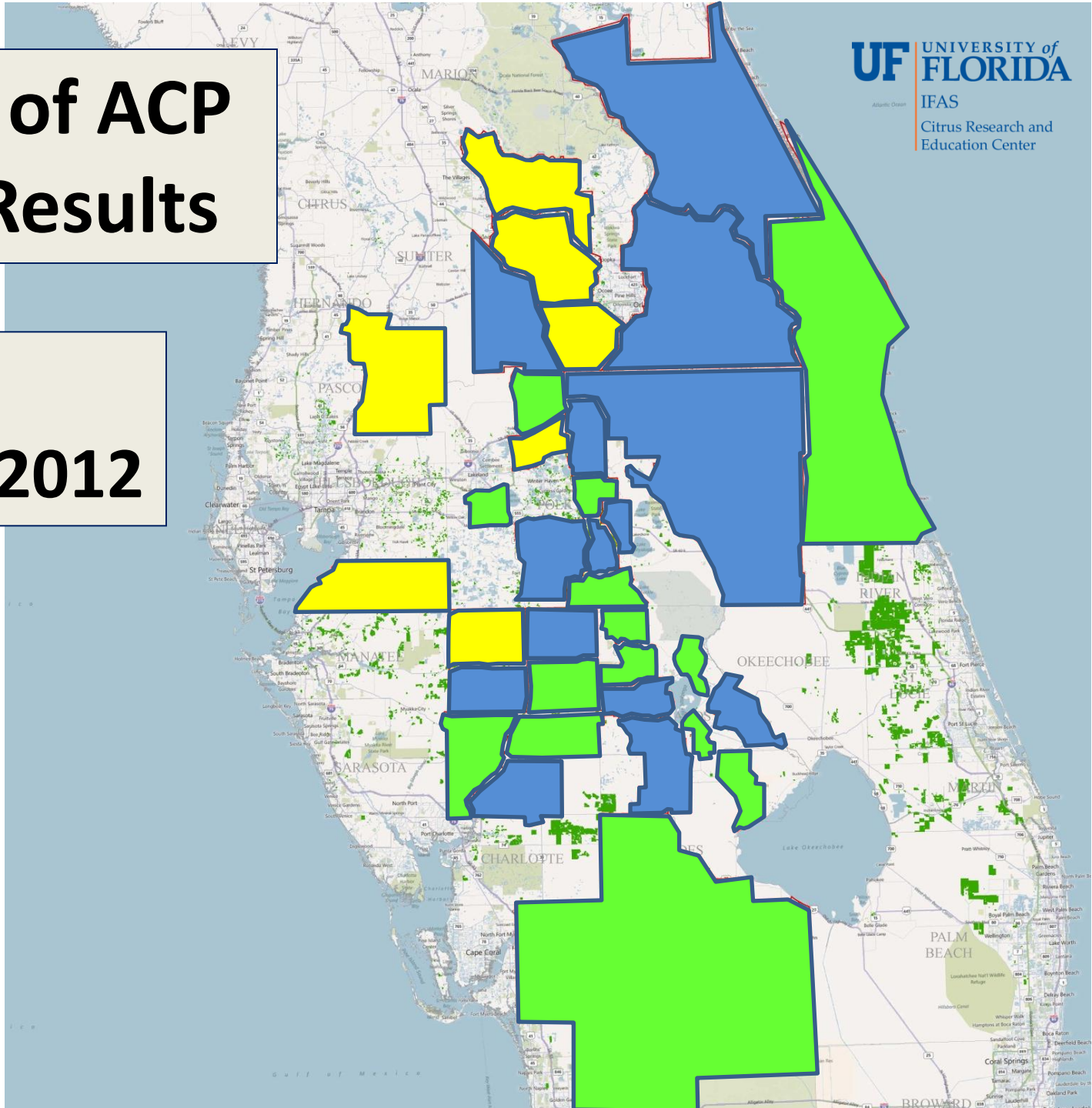
Average ACP
per block

 < 1

 1-5

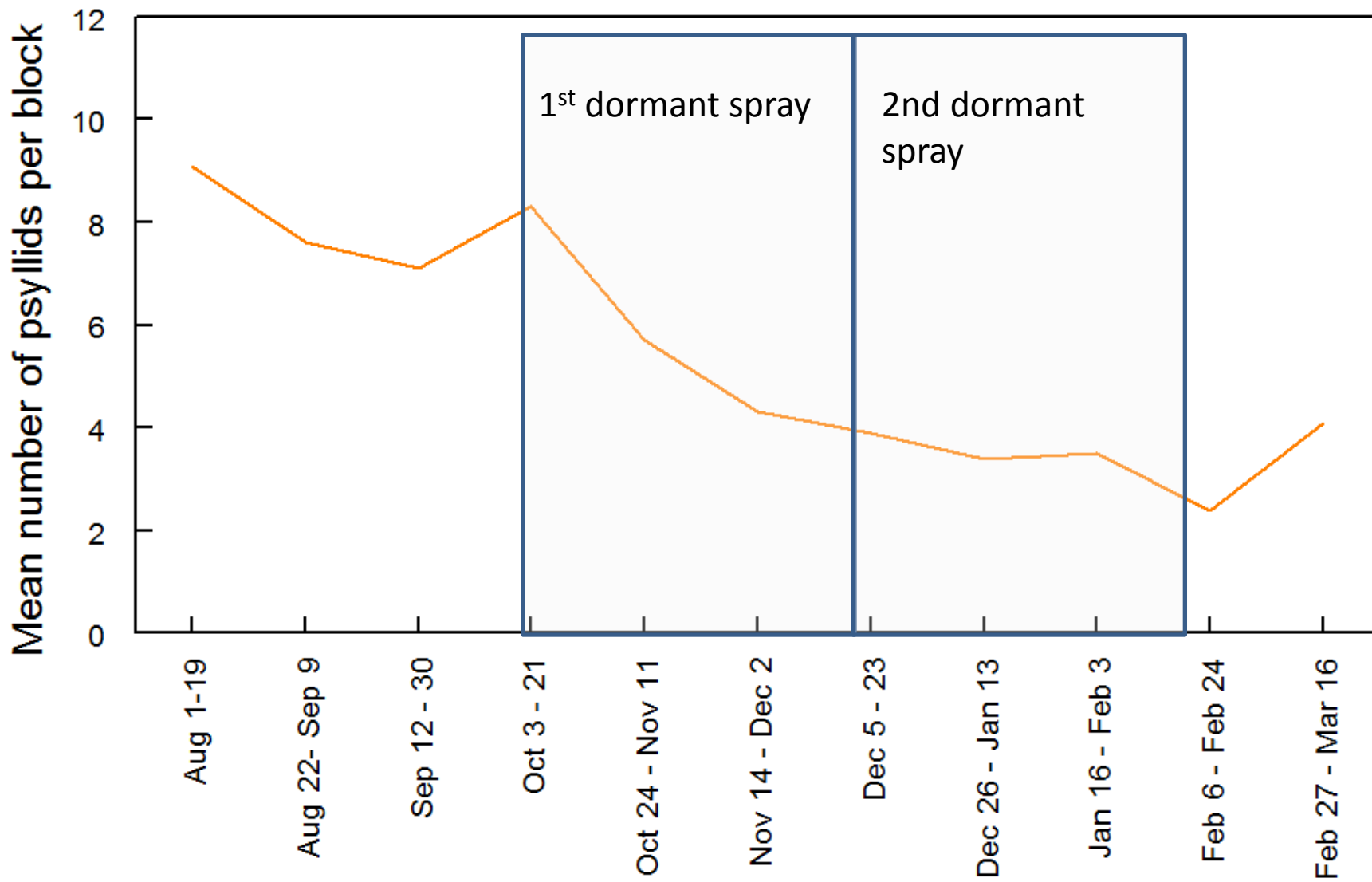
 5-10

 > 10



CHMA Psyllid Scouting

(Statewide Averages)



Overview of ACP Scouting Results

Cycle 10
Feb 6 - 24, 2012

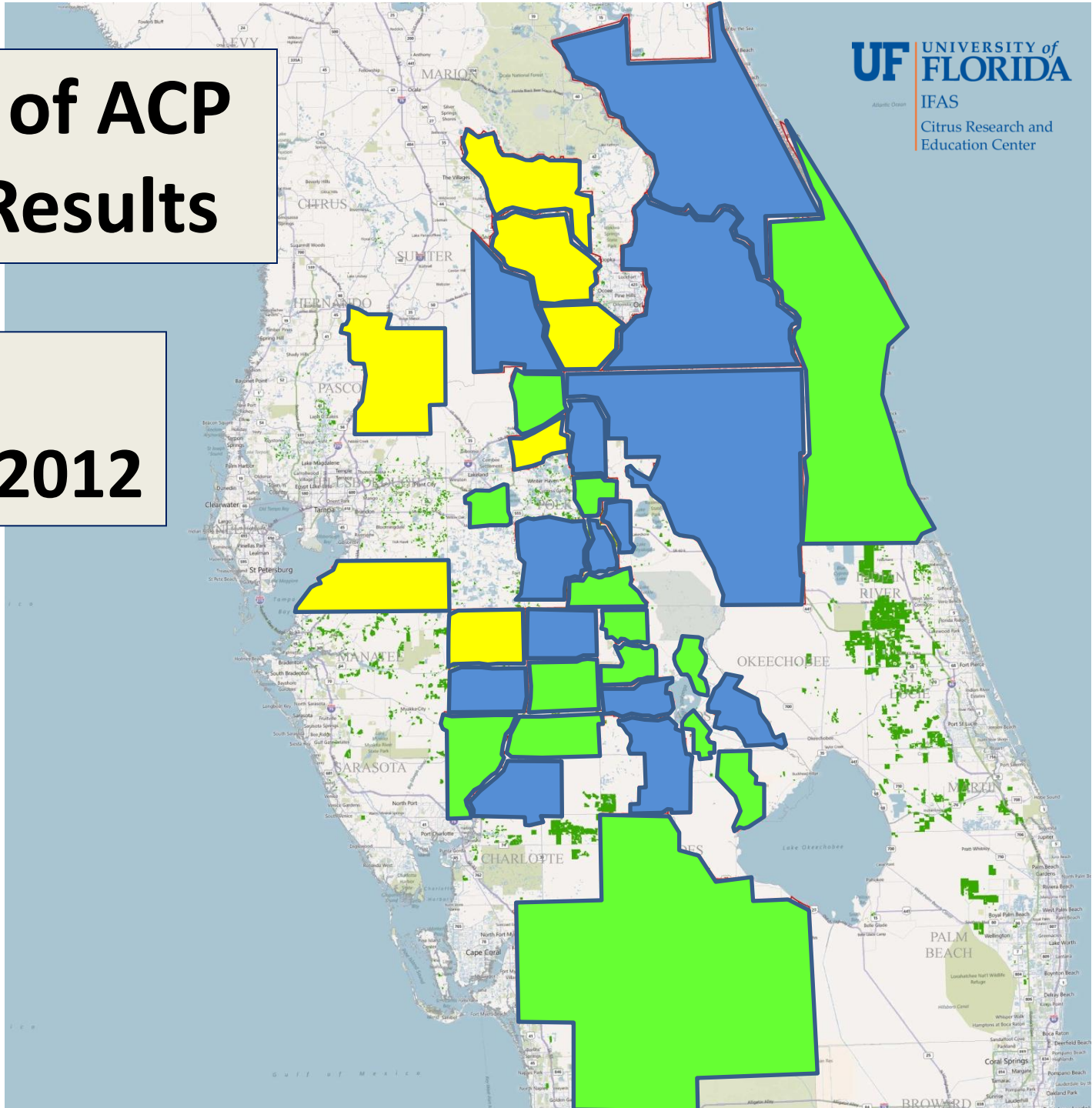
Average ACP
per block

 < 1

 1-5

 5-10

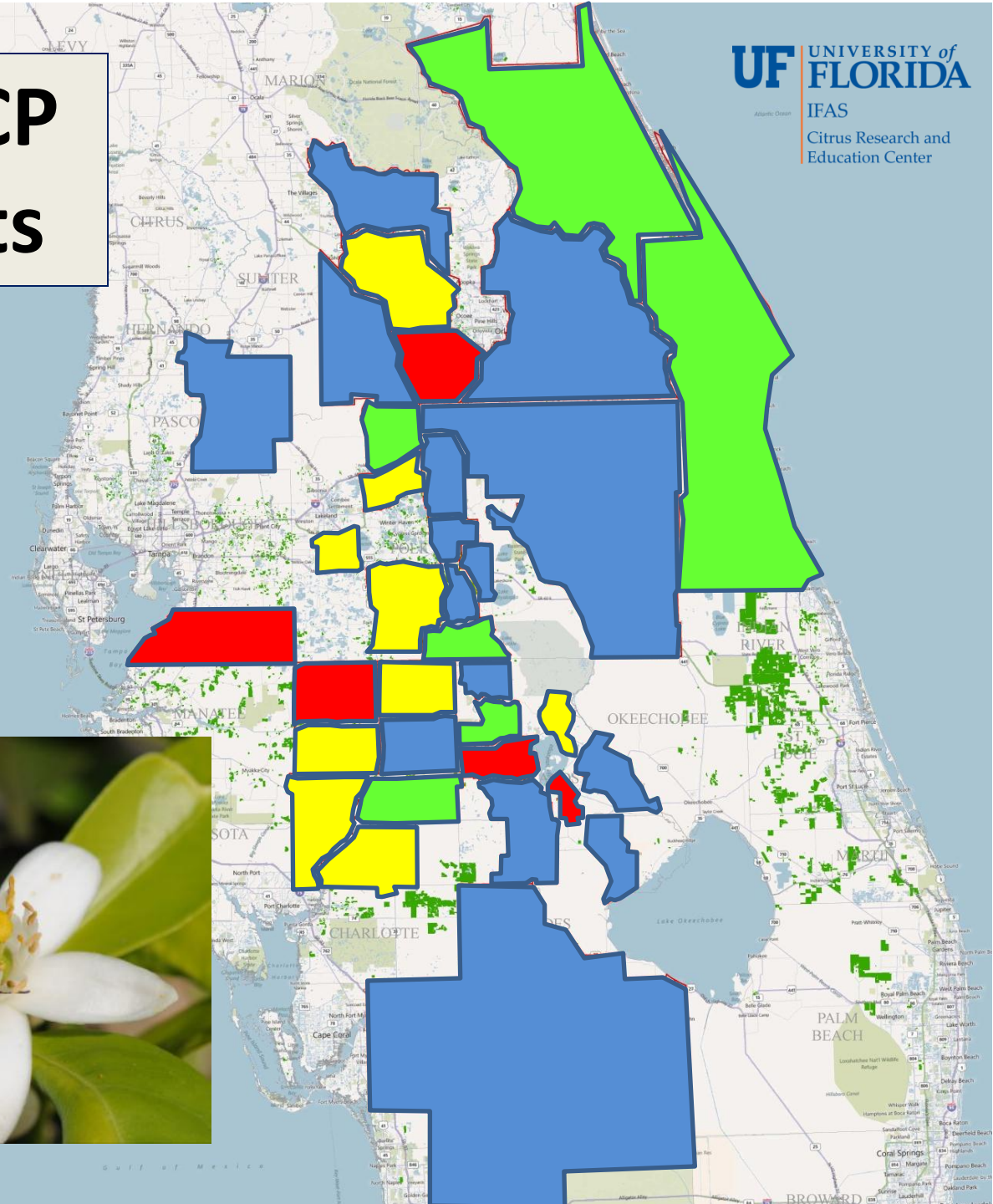
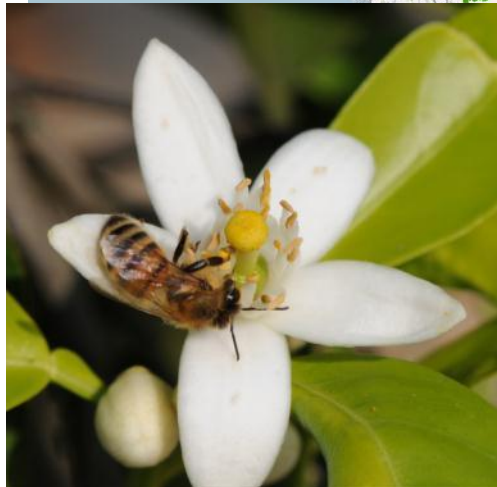
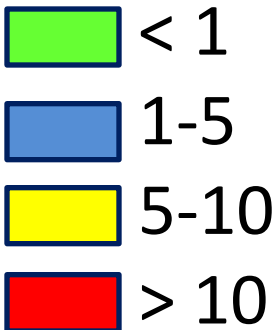
 > 10



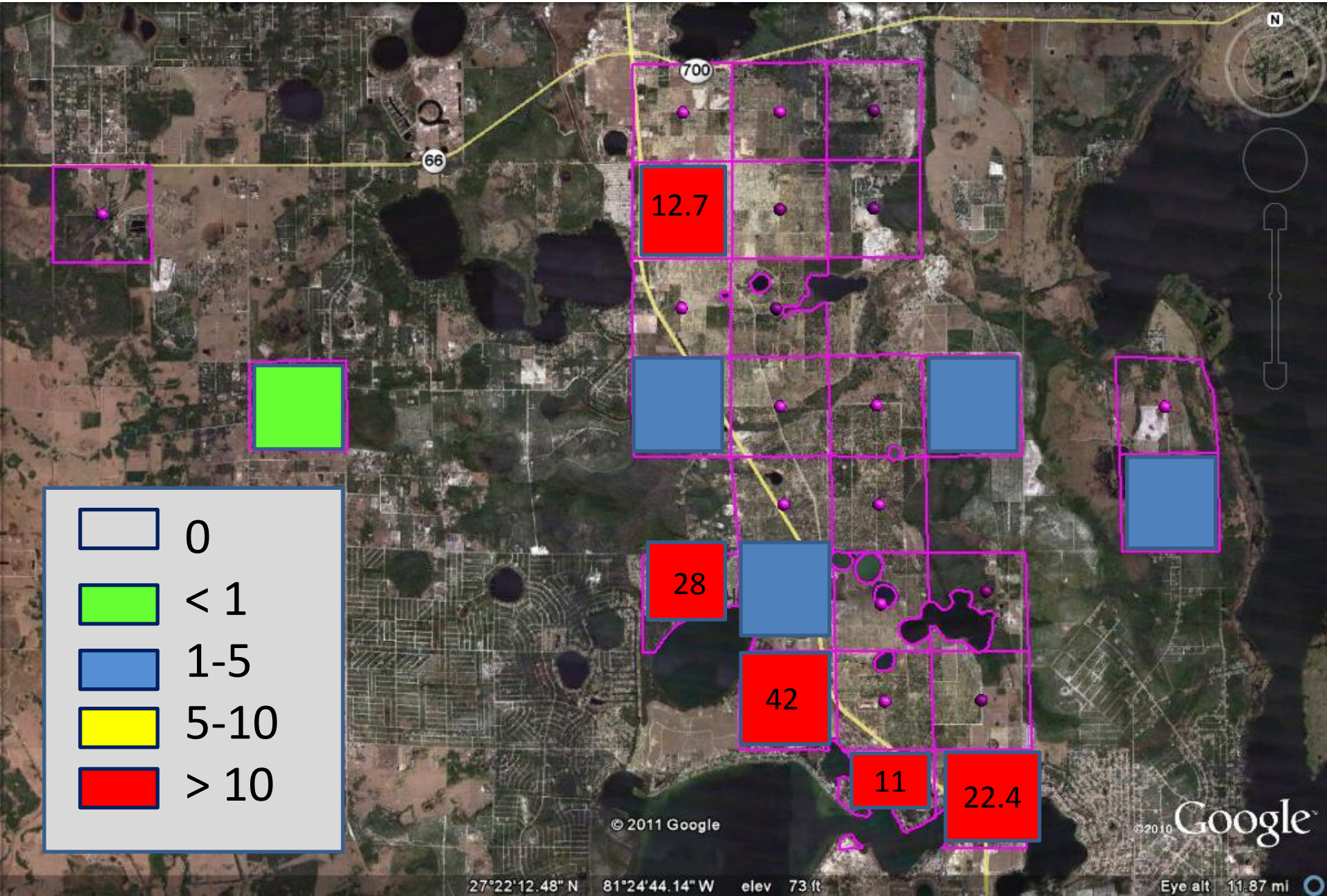
Overview of ACP Scouting Results

Cycle 11
Feb 27-Mar 16,
2012

Average ACP
per block

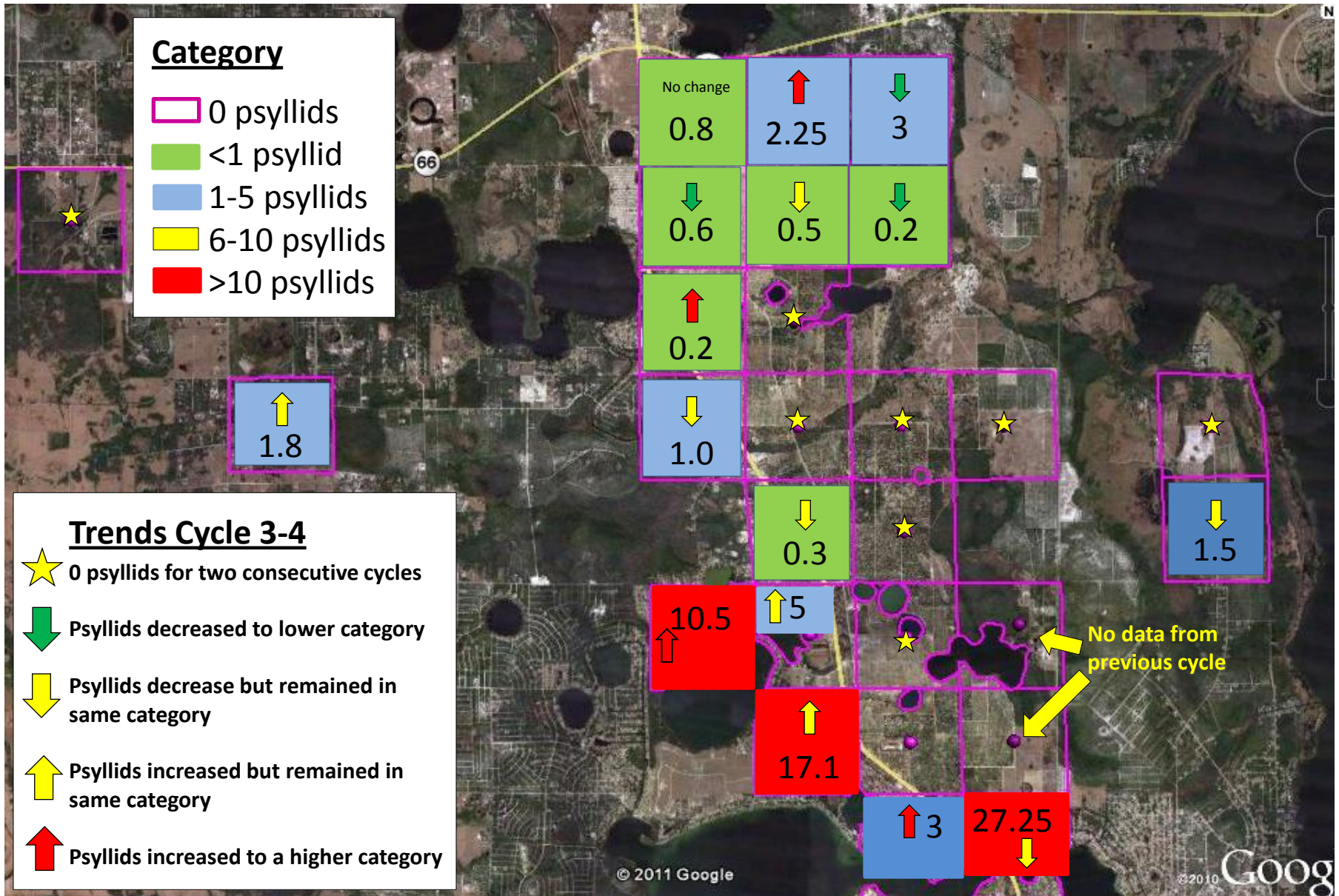


Central Highlands 17/27 CHMA (Cycle 11: Feb 27-Mar 16, 2012)

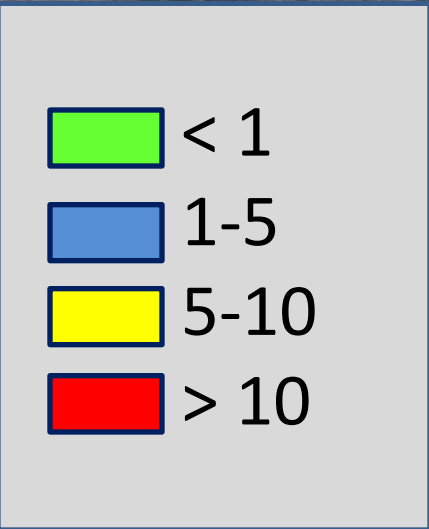
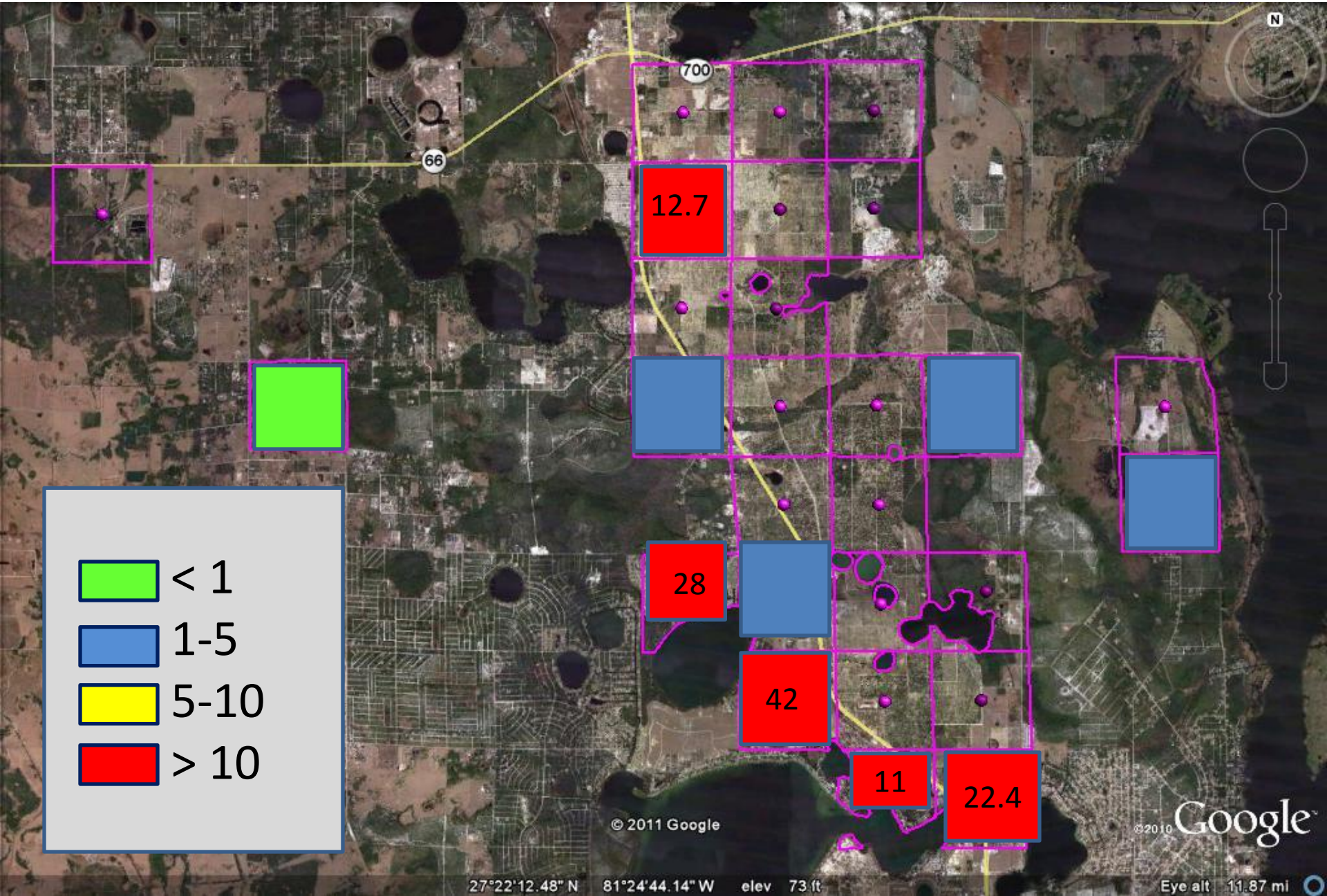


- Average ACP per block = 5.3
- Numbers presented are mean number psyllids per block scouted within each TRS

Central Highlands 17/27 CHMA (Cycle 4: Oct. 3 – 21, 2011)



Central Highlands 17/27 CHMA (Cycle 11: Feb 27-Mar 16, 2012)



© 2011 Google

© 2010 Google

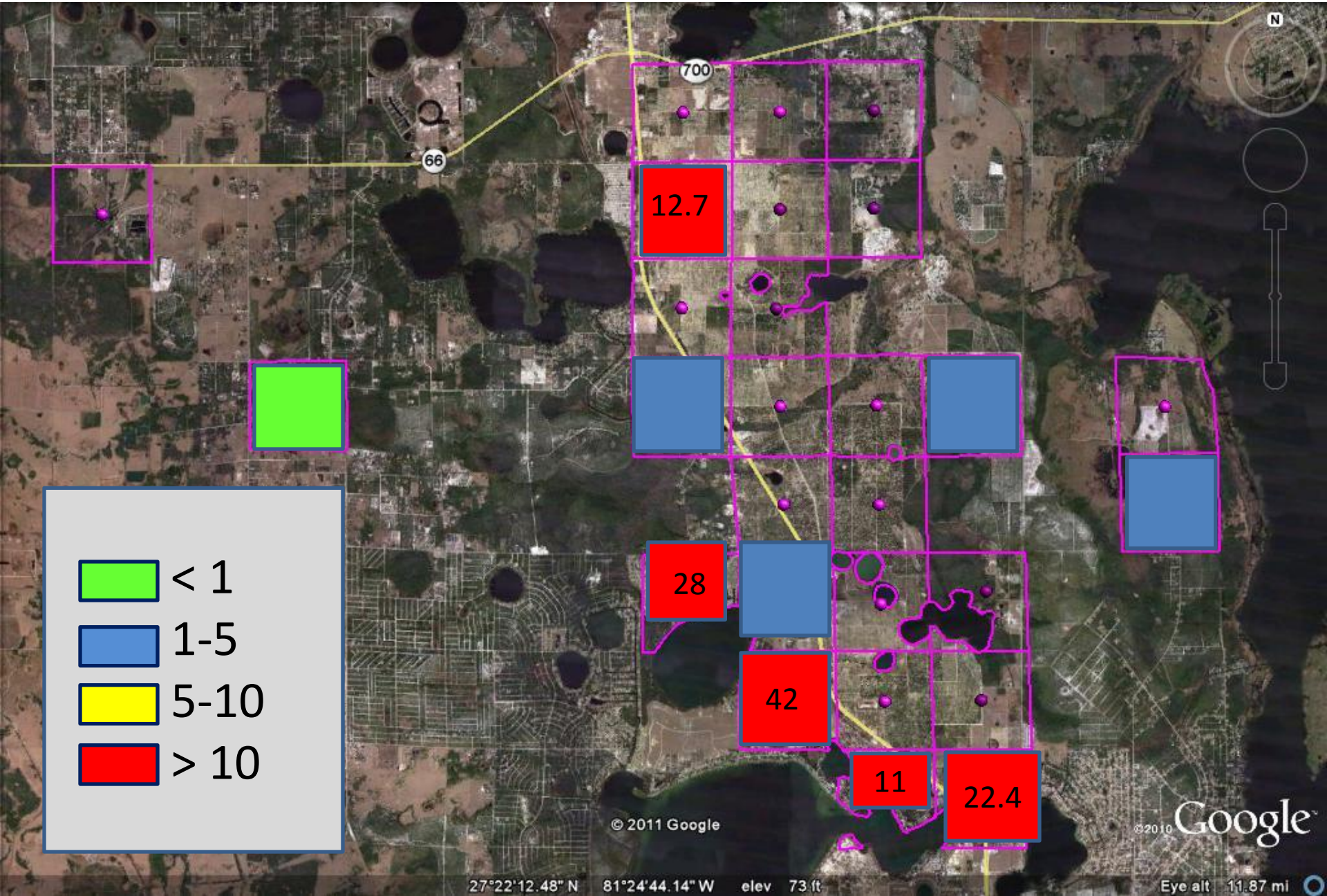
27°22'12.48" N 81°24'44.14" W elev 73 ft

Eye alt 11.87 mi

Central Highlands 17/27 CHMA

	Number of blocks w/ ACP		Total number of ACP	
TRS	Cycle 4	Cycle 11	Cycle 4	Cycle 11
35S29ES27	2/7	2/7	4	89
36S29ES15	2/2	2/2	21	56
36S29ES23	8/10	10/10	171	419
36S29ES25	1/1	1/1	3	11
36S30ES30	5/8	8/8	218	180

Central Highlands 17/27 CHMA (Cycle 11: Feb 27-Mar 16, 2012)



Is the CHMA Program Working?

- YES!
- The results from ongoing scouting efforts by FDACS and USDA will provide valuable insight for CHMA psyllid management programs
- Spread the word and get your neighbors to participate!!!

Acknowledgements

- Citrus Research & Development Foundation (CRDF)
- FDACS-DPI
- USDA-APHIS-PPQ-CHRP